

BOMBAY SHOAL

9°27'27.42"N, 116°55'36.43"E

Geographic area

Bombay Shoal is a small, oceanic and shallow coral atoll located on the eastern edge of the Spratlys. It is less than 50NM northwest of the island of Palawan. The closest shallow geographic feature is Sabina Shoal, under 25NM northwest. Investigator Northeast Shoal and Royal Captain Shoal (just over 12NM from each other) are just over and under 30NM southwest, respectively. Shaped like an elongated ring, Bombay Shoal is 2.4km long (northeast-southwest axis) by 1.6km wide (northwest-southeast axis).

Land area above water

There are no visible above-water land areas in this 2012 satellite image.

Human infrastructure

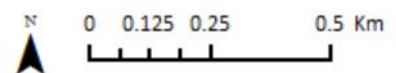
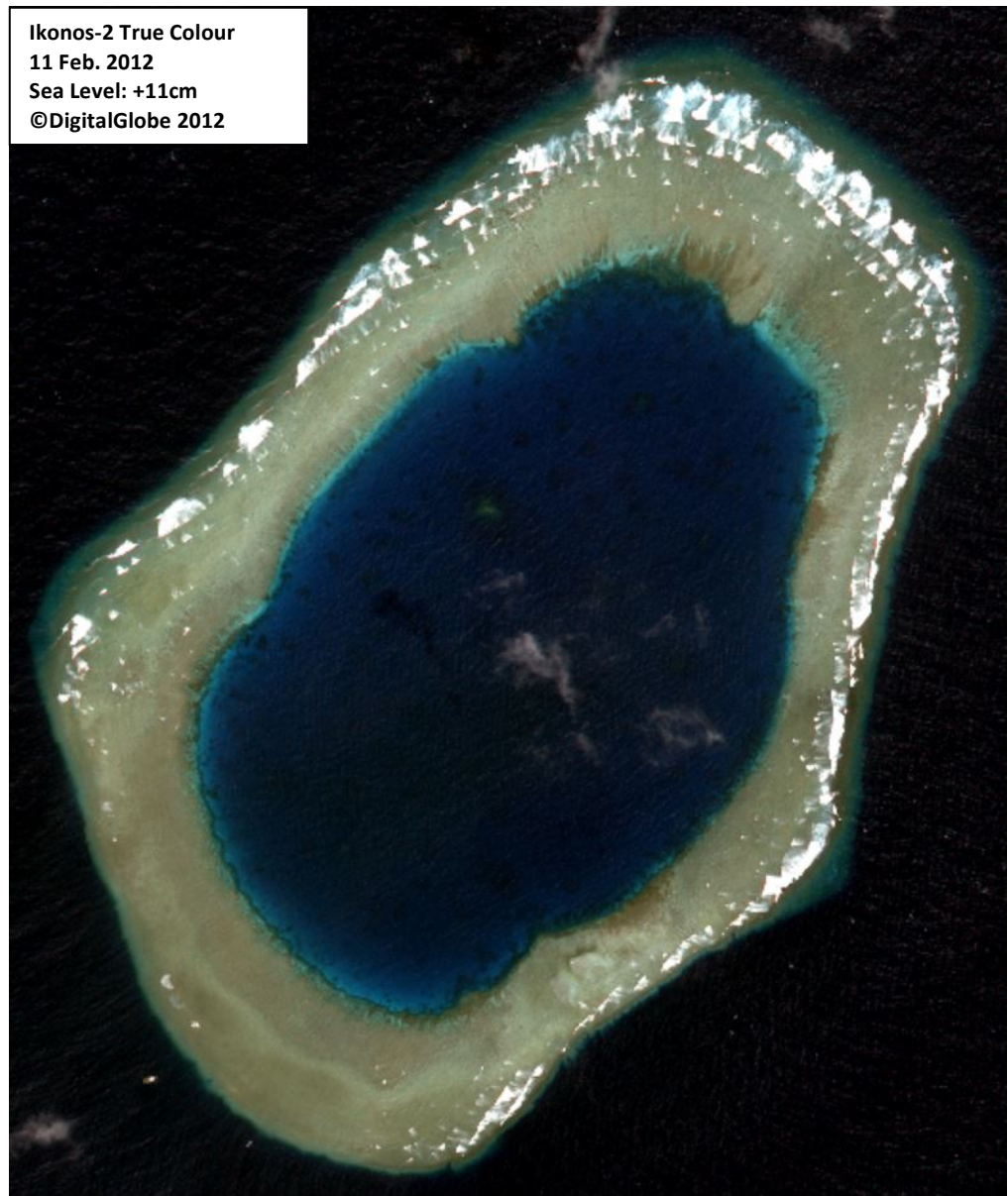
There are no man-made structures on this reef as at 11 February 2012.

Intertidal and submerged area

The aerial coverage of this atoll is 3.07km² comprising a reef flat of 1.35km², a lagoon of 1.37km² and a reef slope of 0.34km². The reef flat surrounds the lagoon in a regular ring that is 200-400m wide and approximately 6km long. It is mostly 1.5-2m deep, deepening significantly towards the edge of the lagoon. The reef flat is

expected to remain fully submerged at Lowest Astronomical Tide as the sea level decreases by 1.19m. It can be deduced from the narrowness of the visible part of the reef slope that it is steep. The lagoon is 1.6km long by over 1km wide. The banks of the lagoon are steep and it is mostly 10-13m deep (although the depth of the central part could not be calculated).

No dredging marks are visible in the 11 February 2012 satellite image. Two 25m- and 35m-long vessels resembling fishing vessels may be seen over the reef slope, on the southwestern side of the reef.

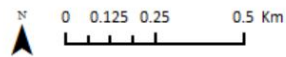
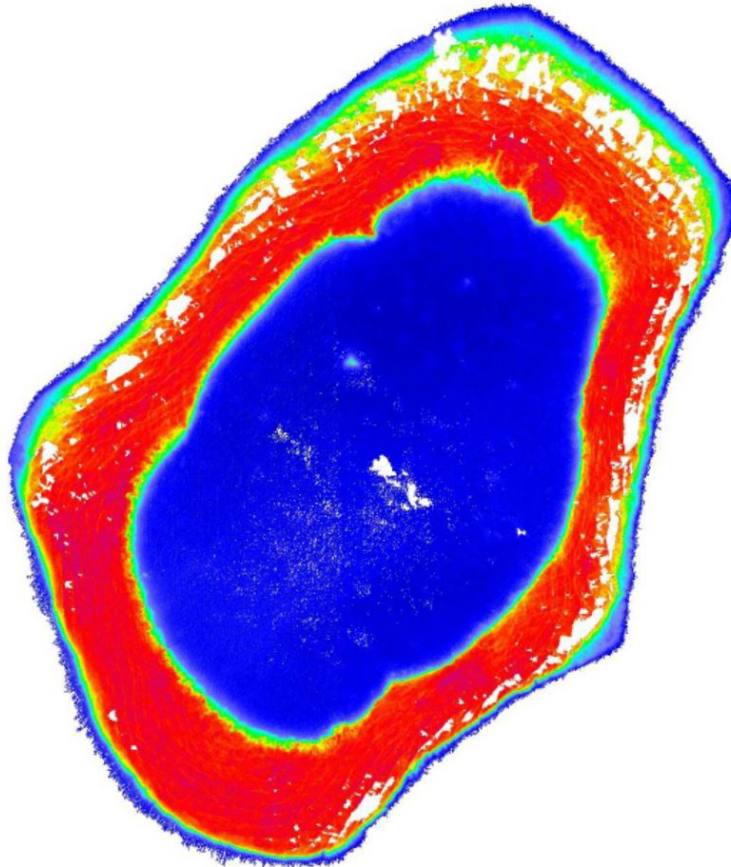


BOMBAY SHOAL

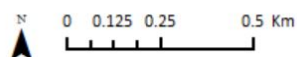
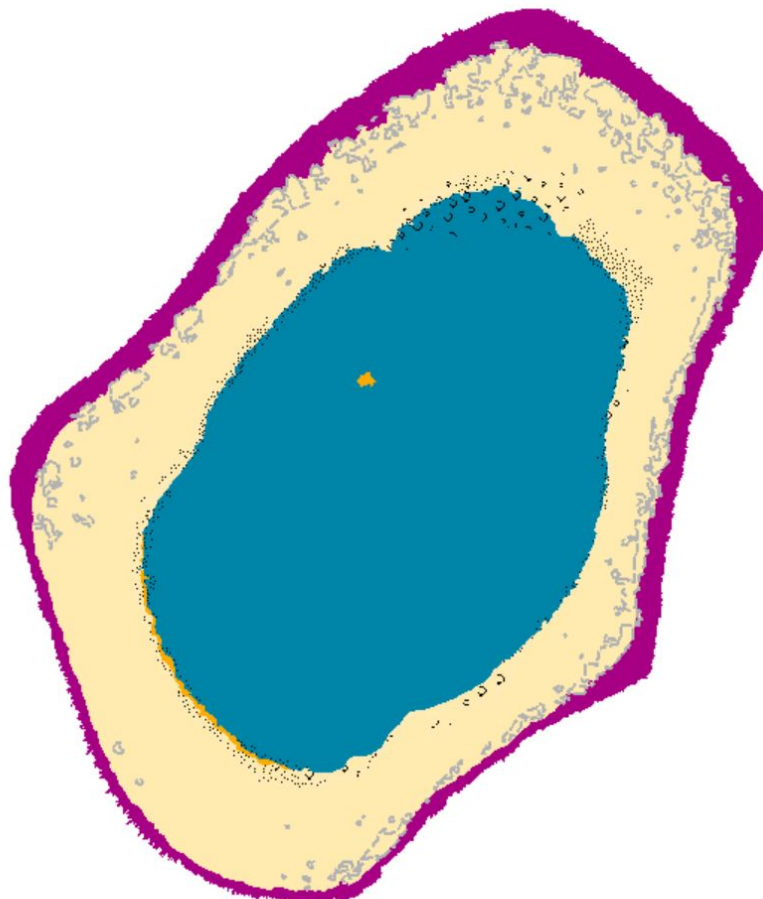
9°27'27.42"N, 116°55'36.43"E

Derived from Ikonos-2 satellite data captured on 11 February 2012 [Sea Level: +11cm]

Bathymetry Map



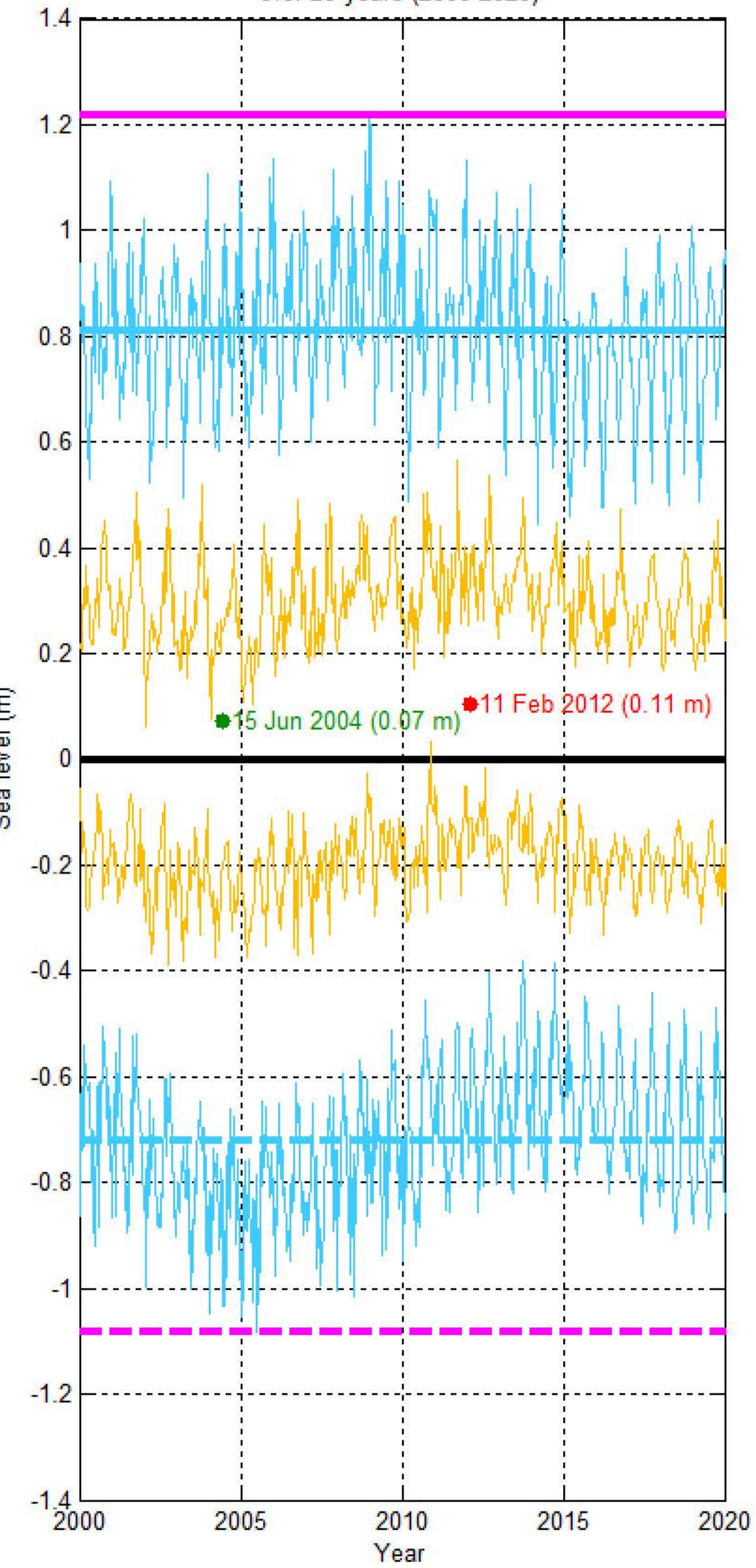
Habitat Classification and Land Cover Map



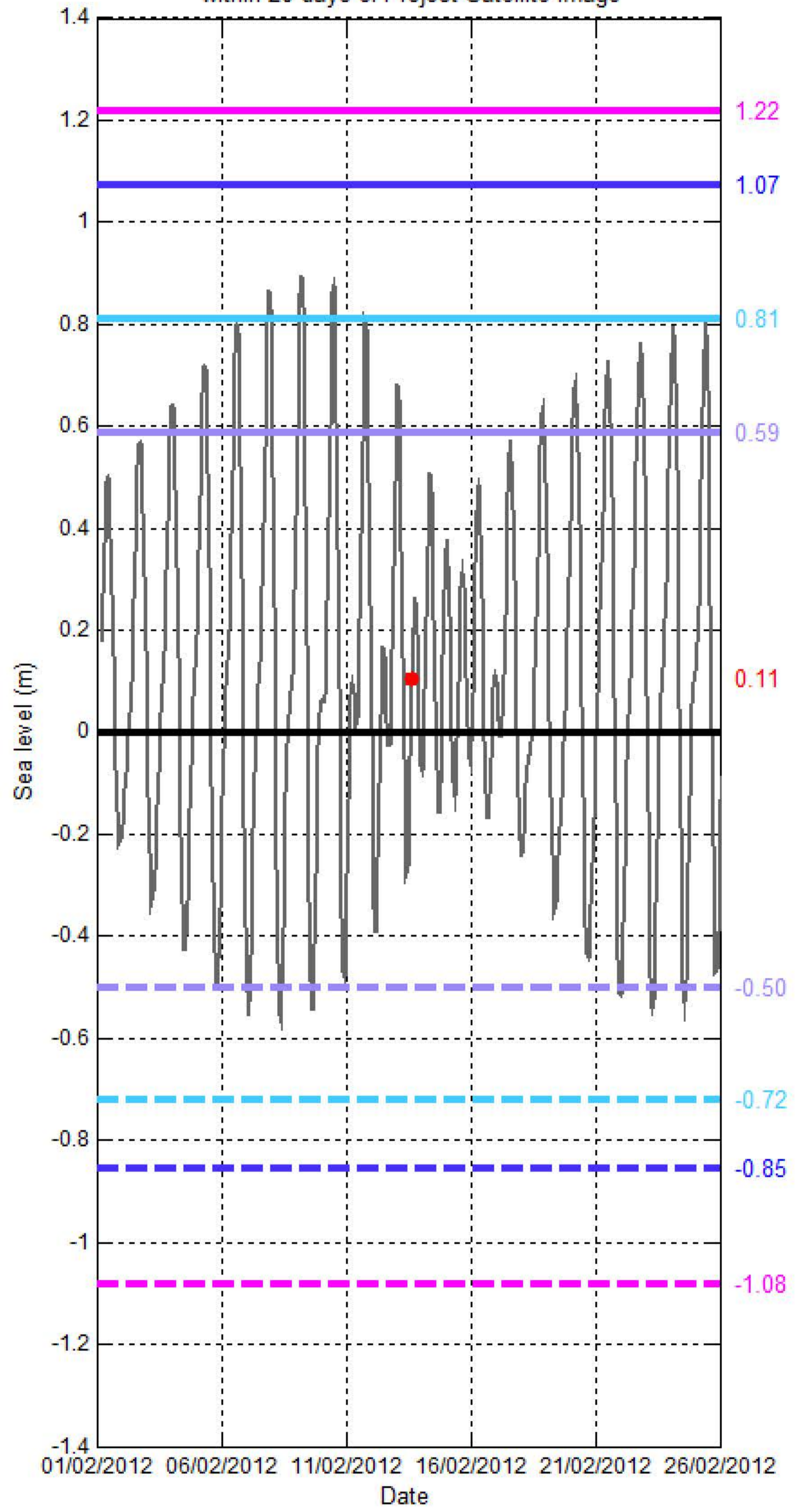
Sea level (SL) at BOMBAY SHOAL

[9°27'27.42"N, 116°55'36.43"E]

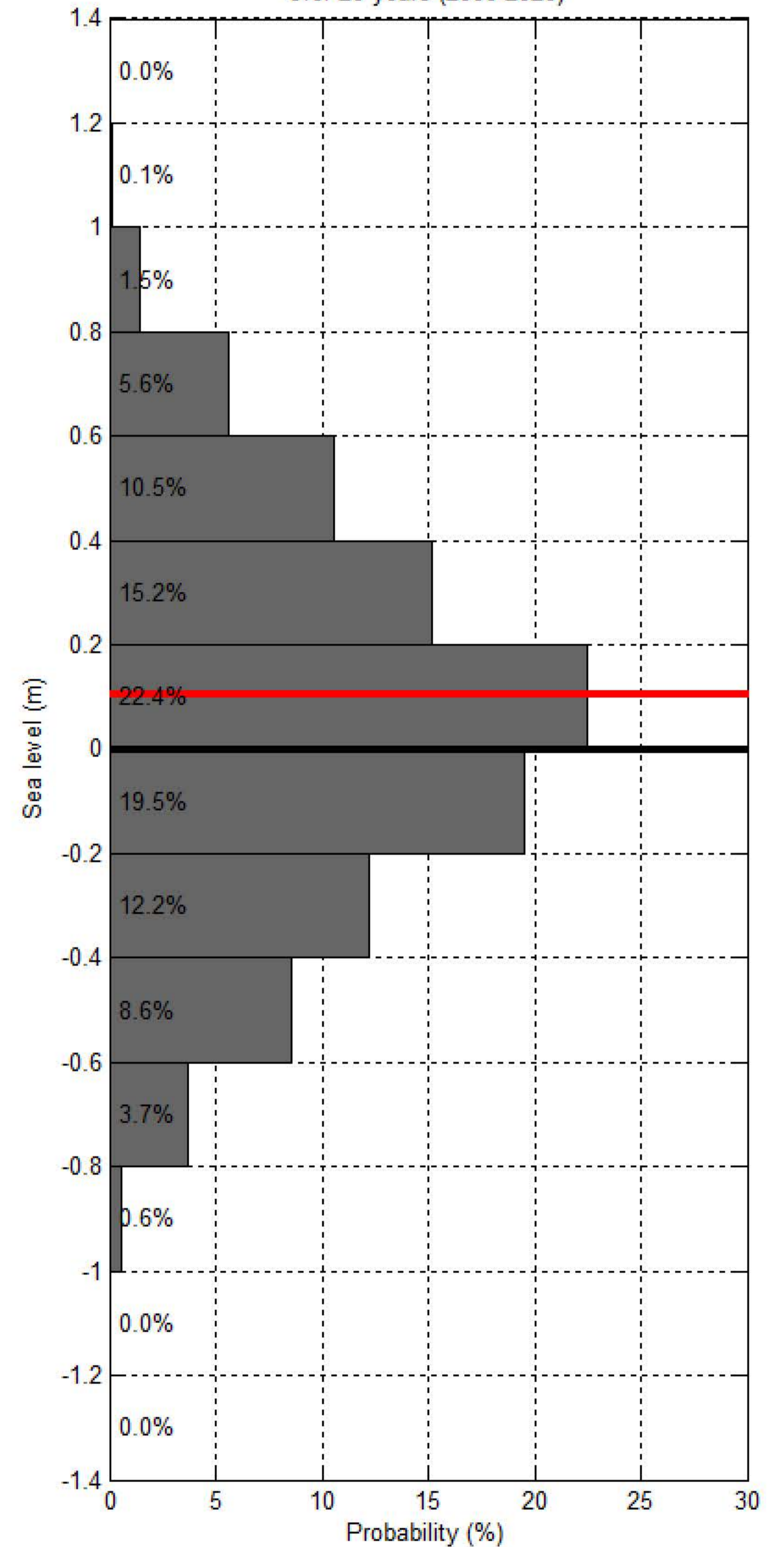
Sea level at spring/neap tide at BOMBAY SHOAL over 20 years (2000-2020)



Sea level at BOMBAY SHOAL within 20 days of Project Satellite Image



Probability of sea level at BOMBAY SHOAL over 20 years (2000-2020)



- Hourly sea level
- SL at spring tide
- SL at Mean High Water Spring
- SL at highest tide of the year
- SL at Mean Higher High Water
- SL at Highest Astronomical Tide
- Project Satellite Image
- Mean Sea Level
- SL at neap tide
- SL at Mean Low Water Spring
- SL at lowest tide of the year
- SL at Mean Lower Low Water
- SL at Lowest Astronomical Tide
- Google Earth and Landsat satellite images