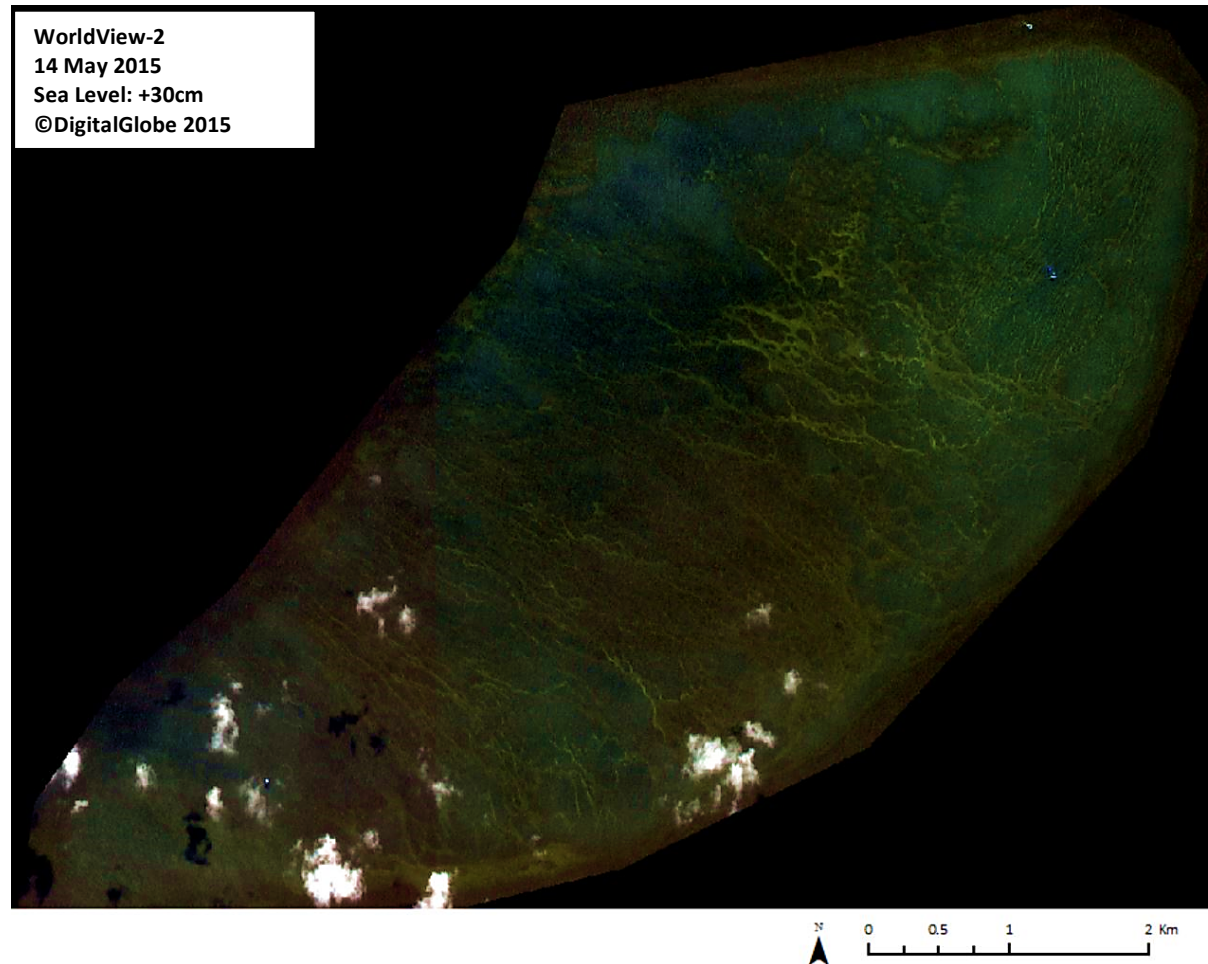


GRAINGER BANK

7°48'18.70"N, 110°28'32.68"E

Geographic area

Grainger Bank is an oceanic coral reef platform located in the southwesternmost part of the Spratlys, around 225NM southeast of Vietnam's mainland, 280NM northwest of the island of Borneo and over 300NM southwest of the island of Palawan. The closest shallow geographic features are Alexandra Bank and Prince of Wales Bank, 13NNM northeast and over 15NM north respectively, and Prince Consort Bank, 26NM west. It is possible but could not be verified that the bank on which this coral reef platform has developed is connected to those on which Alexandra Bank and Prince of Wales Bank are situated. The visible part of this coral reef platform extends 10km along its northeast-southwest axis and 4.5km at the most along its northwest-southeast axis.



Land area above water

There are no visible above-water land areas on this coral reef platform.

Human infrastructure

Four man-made structures are visible on this coral reef platform in the 14 May 2015 satellite image. Two offshore platforms are located in the northeastern part of the bank, 40m away from each other: one is a square 18m-wide steel jacket, the other one is a 15m-wide tower. A tall beacon is located on the southwestern part of the platform; its base has a diameter of 23m. Next to it, an unidentified 4m by 2m structure can be observed.

Intertidal and submerged area

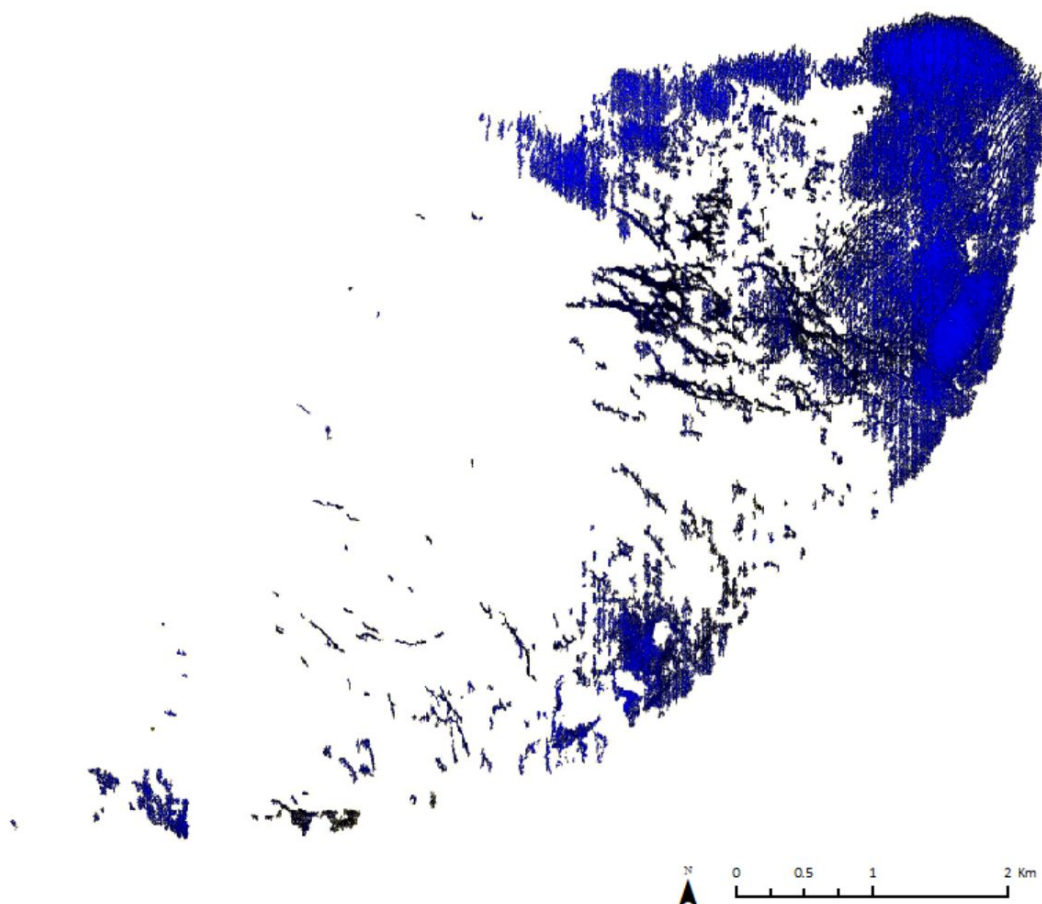
This coral reef platform 27.6km² is deeper than many shallow features in the Spratlys. The shallowest areas are in the northeastern part and along its southeast-facing side. They are 7-9m deep when the sea level is 0.30m above Mean Sea Level. The rest of the platform is over 10m deep. Pronounced spurs and groves are visible throughout. Traces of human activity on the seabed cannot be seen due to the depth of this feature. In addition to the offshore structures, four vessels are visible: one 40m-long vessel next to the circular offshore platform and three others in different locations over the coral platform measuring 17-23m.

GRAINGER BANK

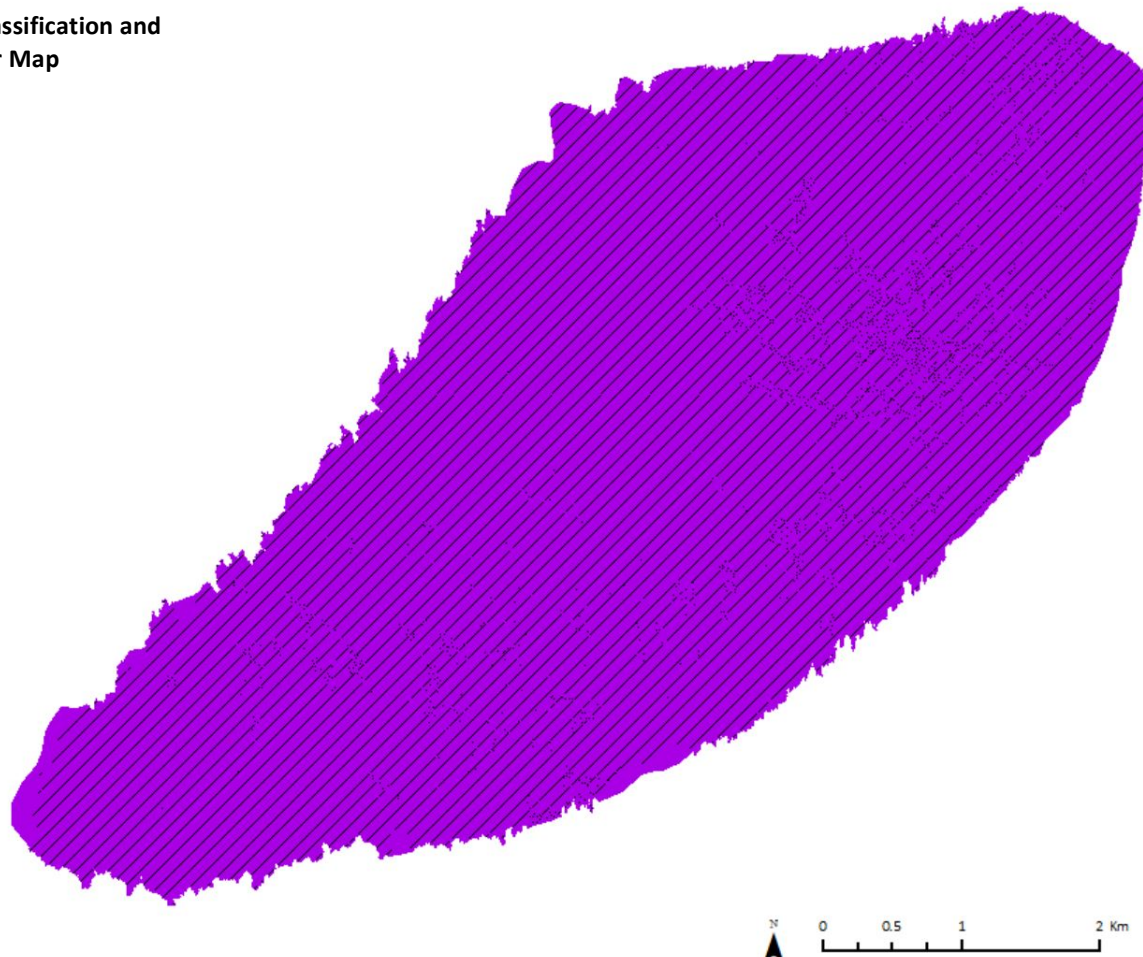
7°48'18.70"N, 110°28'32.68"E

Derived from WorldView-2 satellite data captured on 14 May 2015 [Sea Level: +30cm]

Bathymetry Map

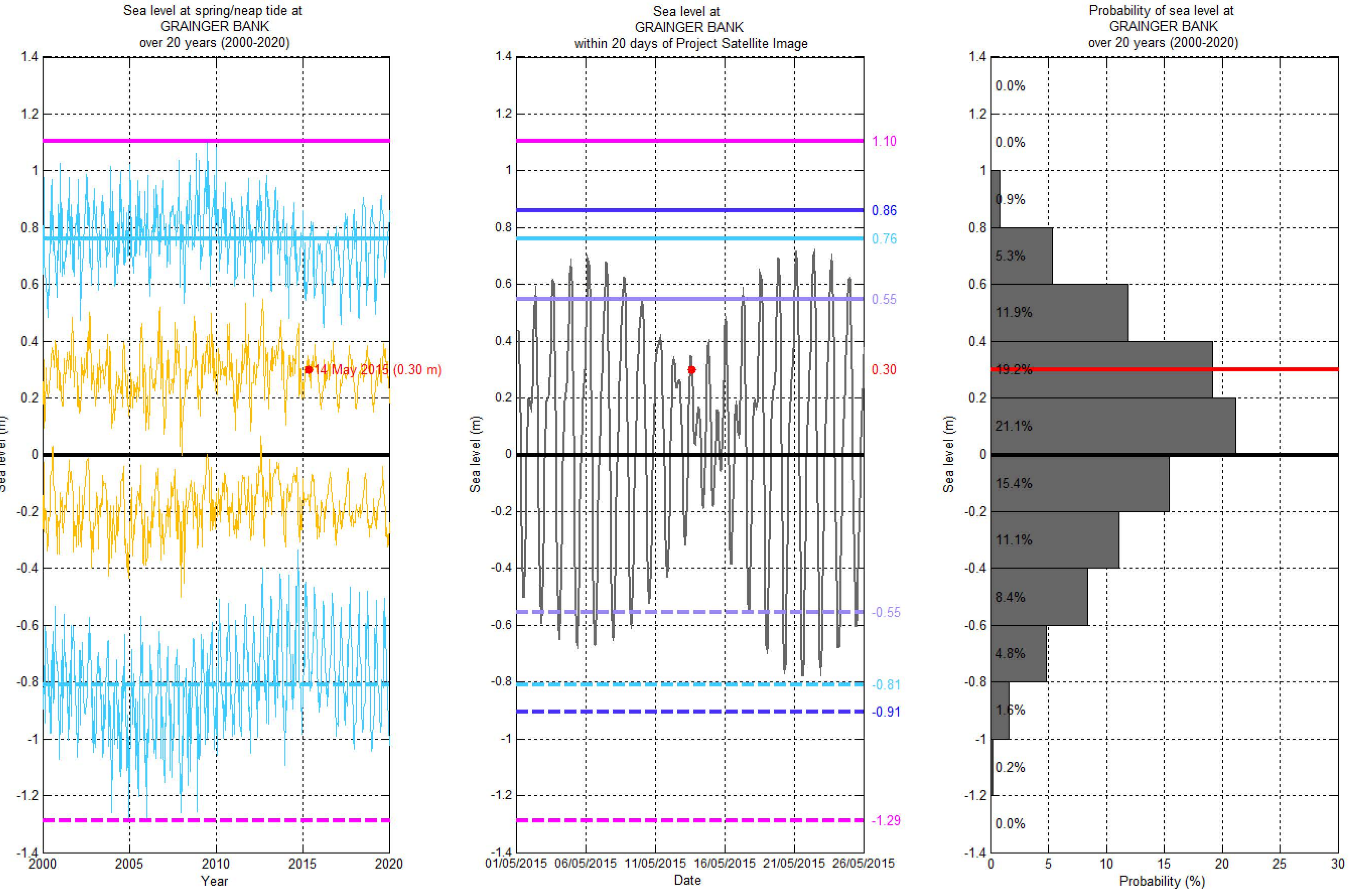


Habitat Classification and Land Cover Map



Sea level (SL) at GRAINGER BANK

[7°48'18.70"N, 110°28'32.68"E]



Hourly sea level SL at spring tide SL at Mean High Water Spring SL at highest tide of the year SL at Mean Higher High Water SL at Highest Astronomical Tide Project Satellite Image
Mean Sea Level SL at neap tide SL at Mean Low Water Spring SL at lowest tide of the year SL at Mean Lower Low Water SL at Lowest Astronomical Tide Google Earth and Landsat satellite images