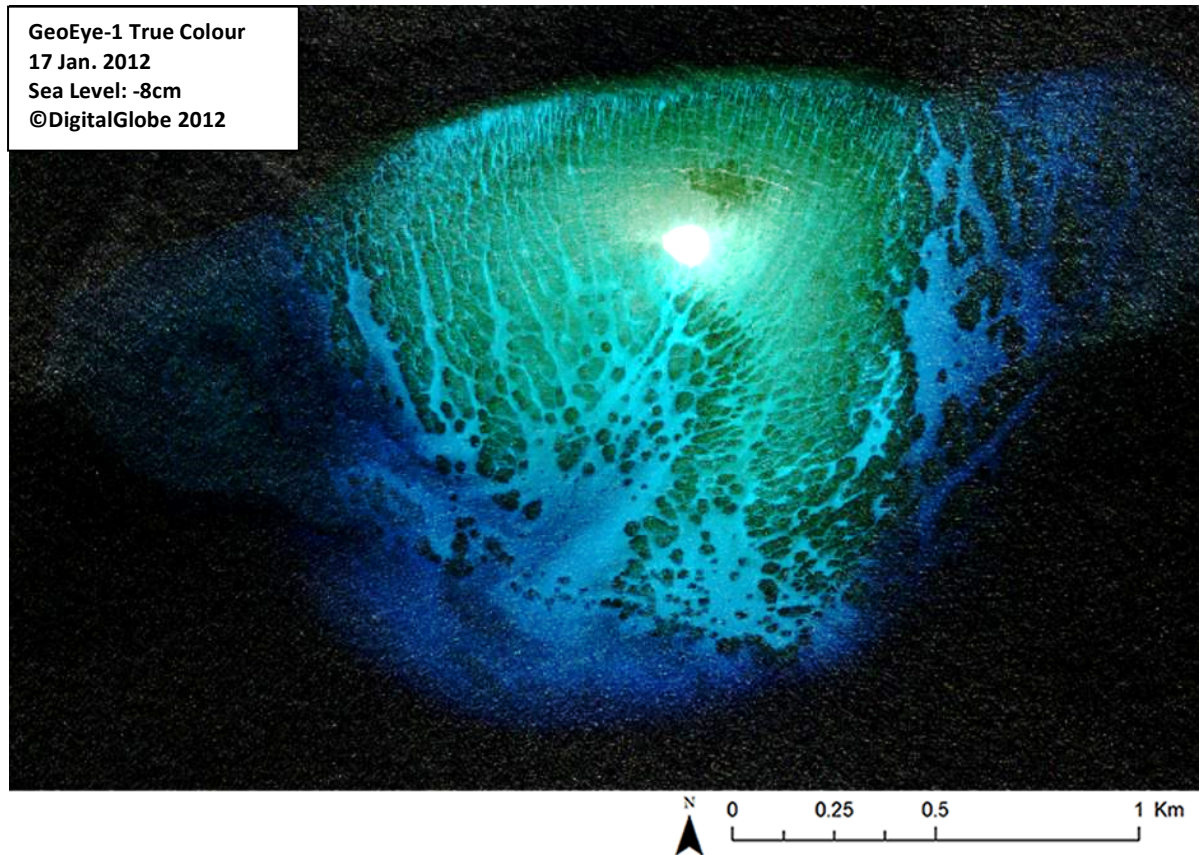


ZHONGZHOU REEF (TIZARD BANK)

10°23'9.95"N, 114°24'48.66"E

Geographic area

Zhongzhou Reef is a coral reef platform of the northern outer ring of Tizard Bank in the northern part of the Spratlys. It is located between Itu Aba, around 2.5NM west and Sand Cay, less than 4NM east. The reef platform extends 2.7km along its west-east axis and 1.4km along its north-south axis.



Land area above water

In the 17 January 2012 satellite image, there is one above-water sand bank. It is oval, 90m long by 70m wide and located in the center of a coral platform, which is more than 1m deep. However, it is unlikely to be a permanent above-water feature. The satellite images viewable on Google Earth from 15 February 2006, 31 March 2012 and 29 February 2015 show a sand bank in the same area but not the same location; it also has a different shape and size. Furthermore, no sand bank is visible in the 4 November 2014 satellite image. This bank is also unlikely to be above water during spring high tides as the sea level is expected to increase by 86cm at Mean High Water Spring.

Human infrastructure

There are no man-made structures visible on this reef as at 4 November 2014.

Intertidal and submerged area

The aerial coverage of this coral reef area is 3.17km² although this may be an underestimation given that the reef slope of Zhongzhou Reef may connect with the reef platform located on each side (despite this connection not being clearly visible on satellite images). The reef flat is 0.11km² and the reef slope 3.05km². The reef flat, being 1.3-2m deep at Mean Sea Level is unlikely to be exposed at Lowest Astronomical Tide.

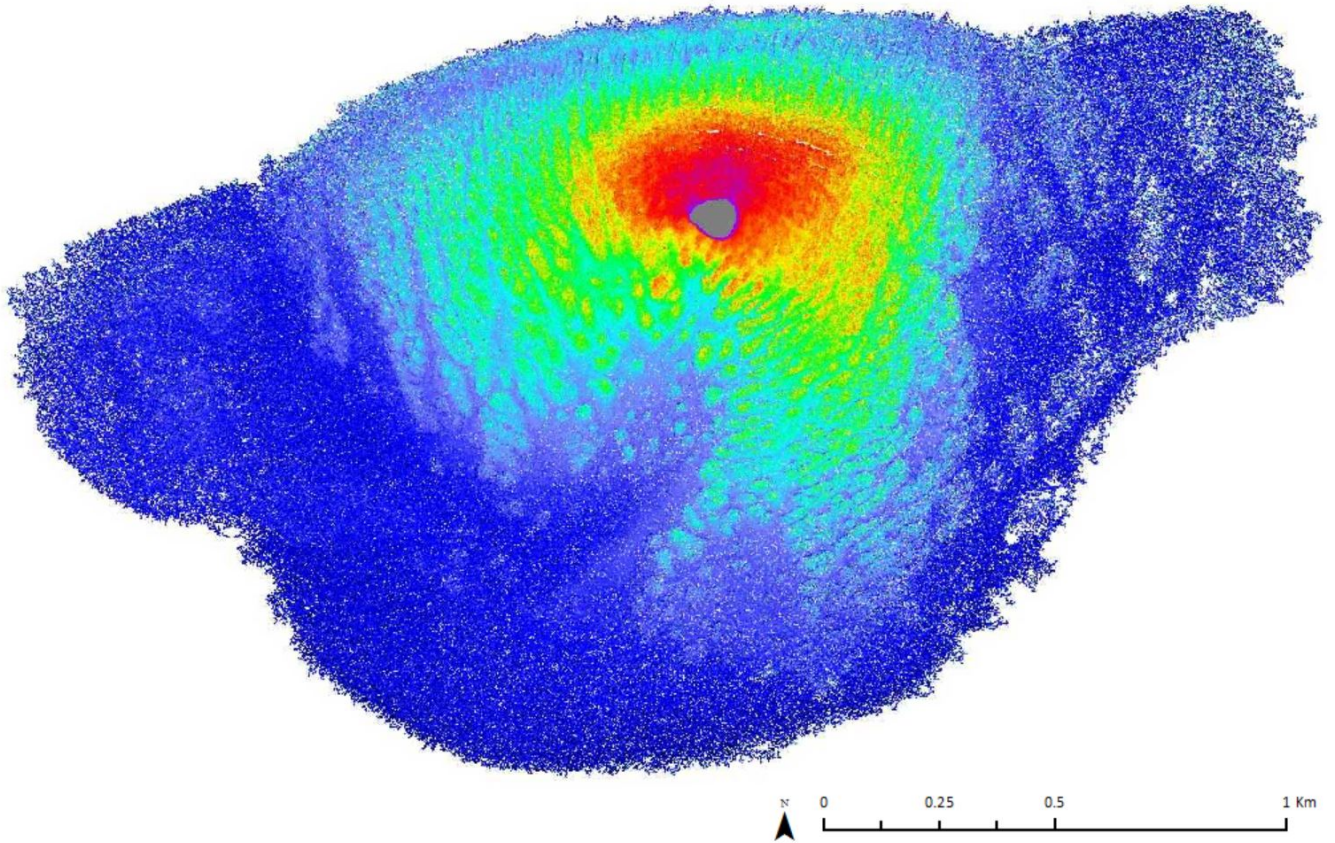
The reef slope is mostly 3-6m deep although the outer part can be up to 10m deep. Marked spurs and grooves are visible on most of the reef slope (except south). Grooves extend up to 800m or more from north to south.

ZHONGZHOU REEF (TIZARD BANK)

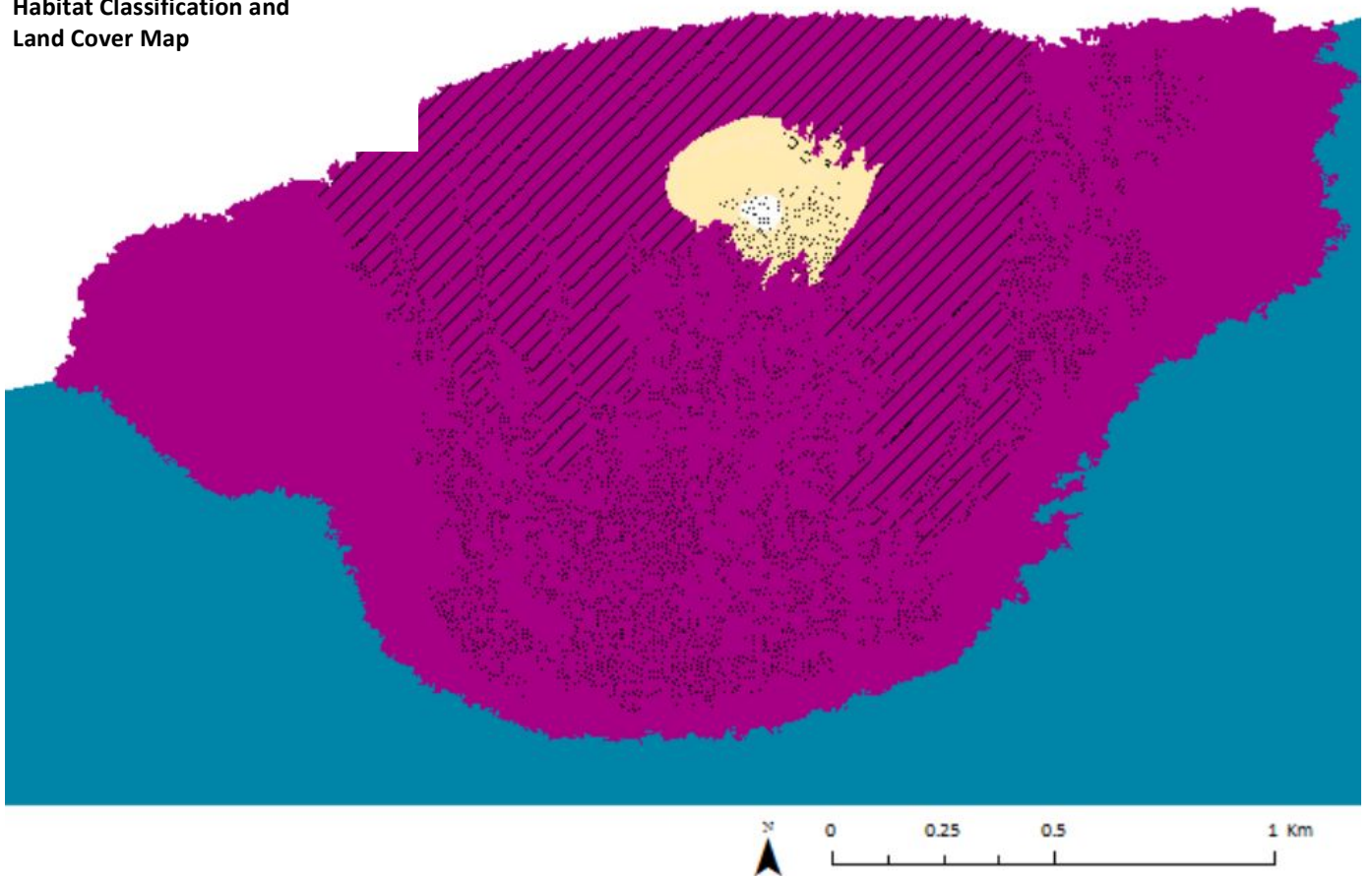
10°23'9.95"N, 114°24'48.66"E

Derived from GeoEye-1 satellite data captured on 17 January 2012 [Sea Level: -8cm]

Bathymetry Map



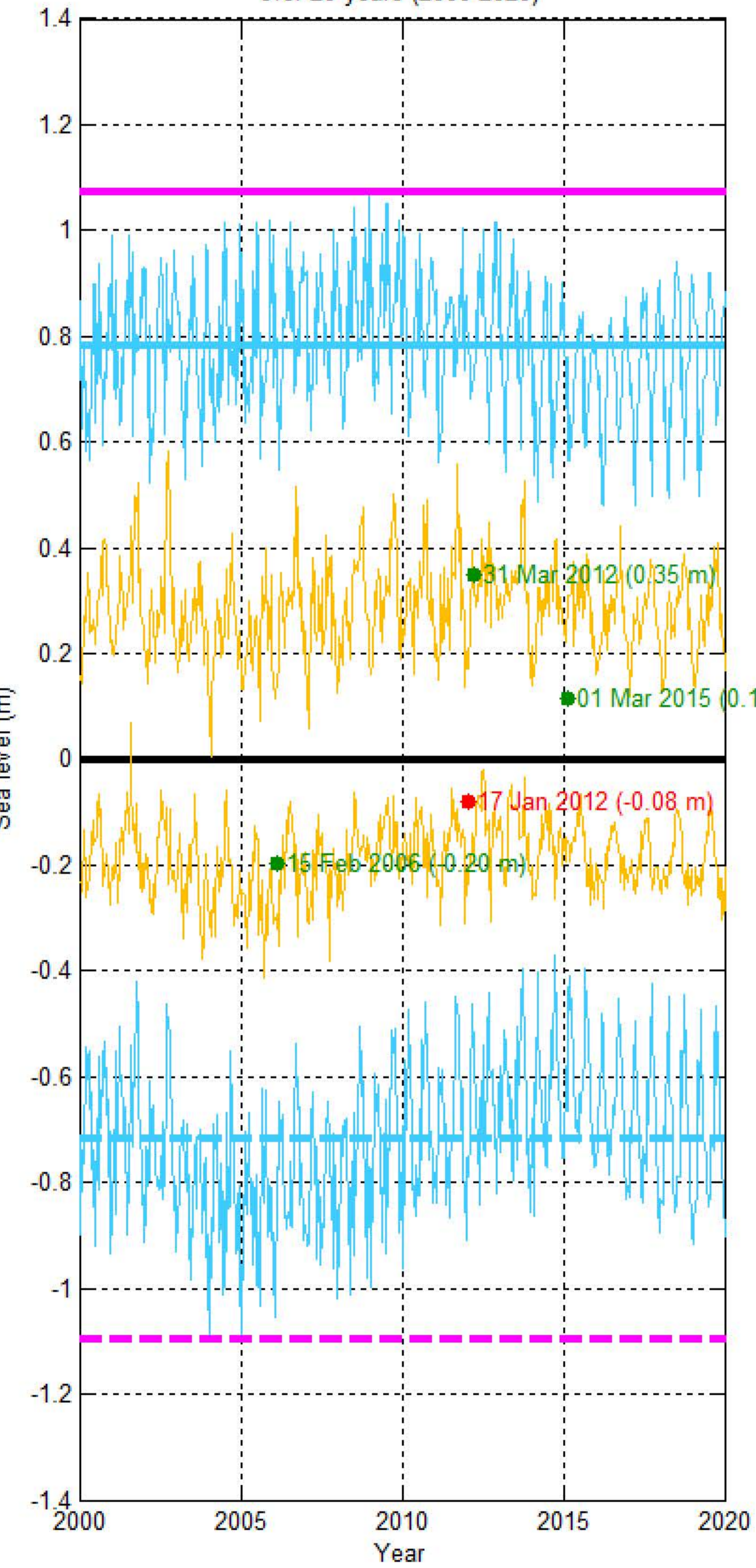
Habitat Classification and Land Cover Map



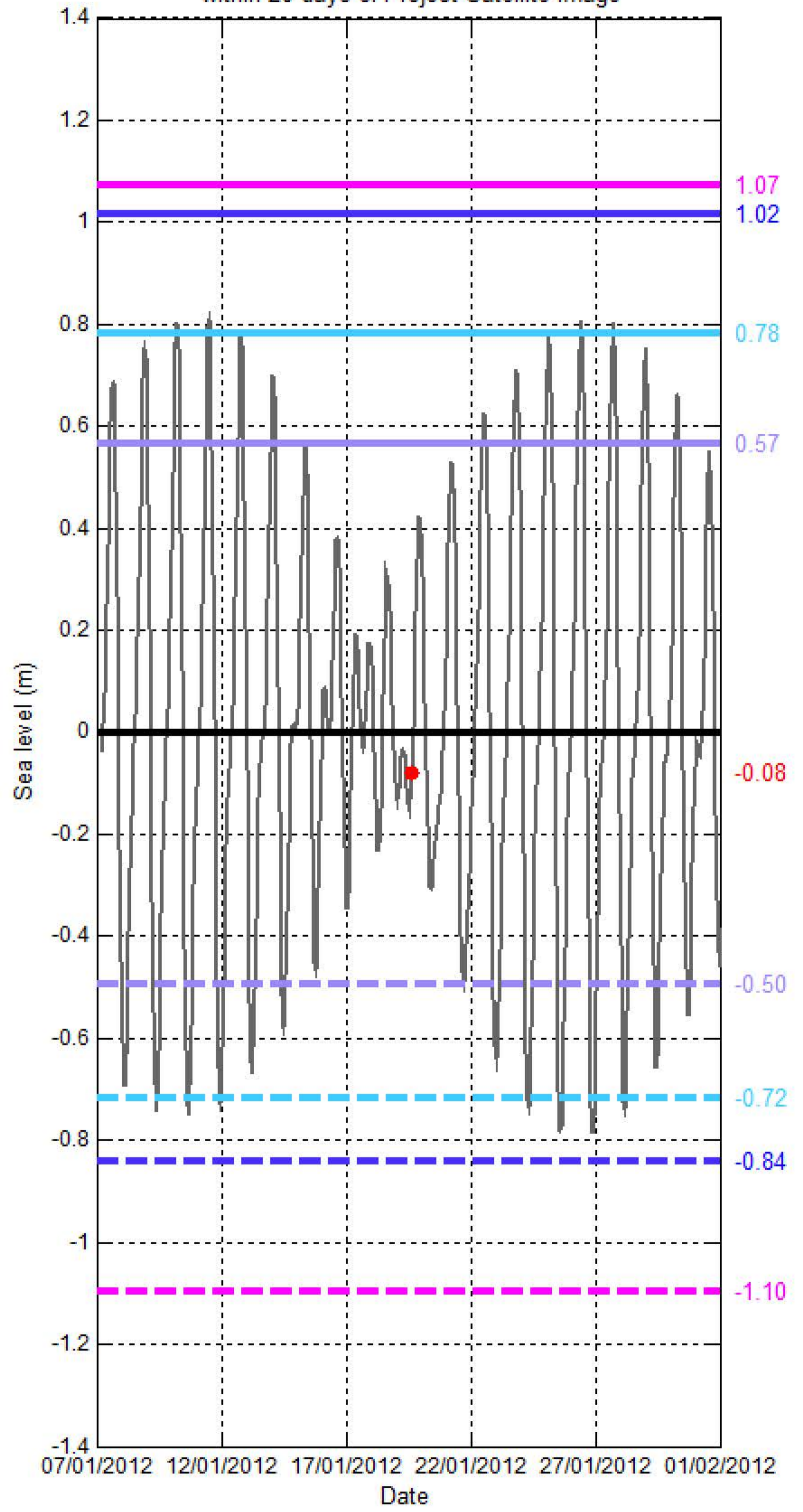
Sea level (SL) at ZHONGZHOU REEF (TIZARD BANK)

[10°23'09.95"N, 114°24'48.66"E]

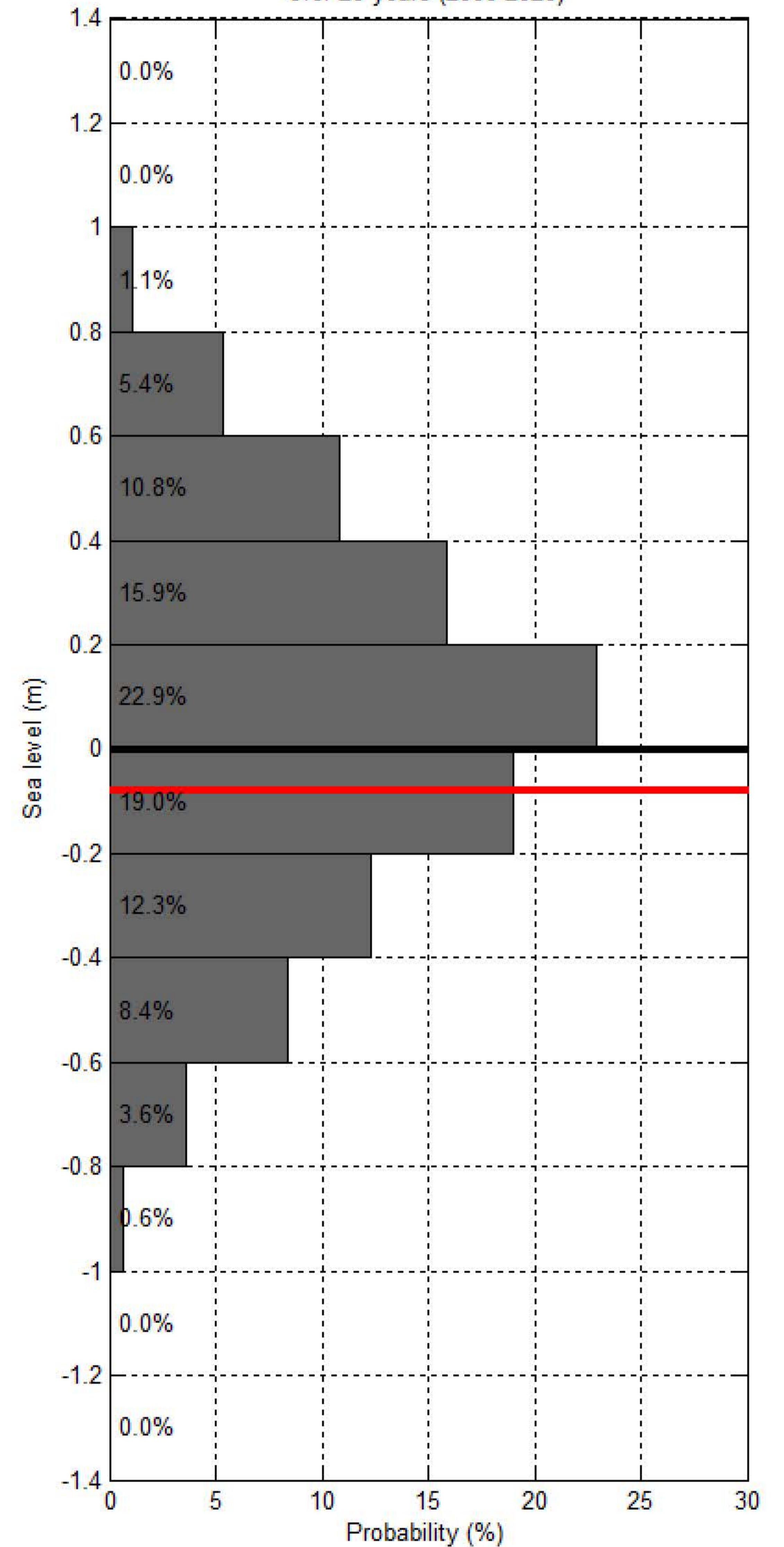
Sea level at spring/neap tide at TIZARD BANK - ZHONGZHOU REEF over 20 years (2000-2020)



Sea level at TIZARD BANK - ZHONGZHOU REEF within 20 days of Project Satellite Image



Probability of sea level at TIZARD BANK - ZHONGZHOU REEF over 20 years (2000-2020)



- Hourly sea level
- SL at spring tide
- SL at Mean High Water Spring
- SL at highest tide of the year
- SL at Mean Higher High Water
- SL at Highest Astronomical Tide
- Project Satellite Image
- Mean Sea Level
- SL at neap tide
- SL at Mean Low Water Spring
- SL at lowest tide of the year
- SL at Mean Lower Low Water
- SL at Lowest Astronomical Tide
- Google Earth and Landsat satellite images