

## ALEXANDRA BANK

8°01'16.64"N, 110°36'42.03"E

### **Geographic area**

Alexandra Bank is an oceanic coral reef platform located in the southwesternmost part of the Spratlys, just under 220NM southeast of Vietnam's mainland, 280NM northwest of the island of Borneo and over 300NM southwest of the island of Palawan. The closest shallow geographic features are Prince of Wales Bank, 3.5NM northwest and Grainger Bank just 11NM southwest. It is possible, though it could not be verified, that the bank on which this coral reef platform has developed is connected to those on which Grainger Bank and Prince of Wales Bank are situated. The visible part of this coral reef platform extends 8km along its north-south axis and 5.5km along its west-east axis.

### **Land area above water**

There are no visible above-water land areas on this coral reef platform.

### **Human infrastructure**

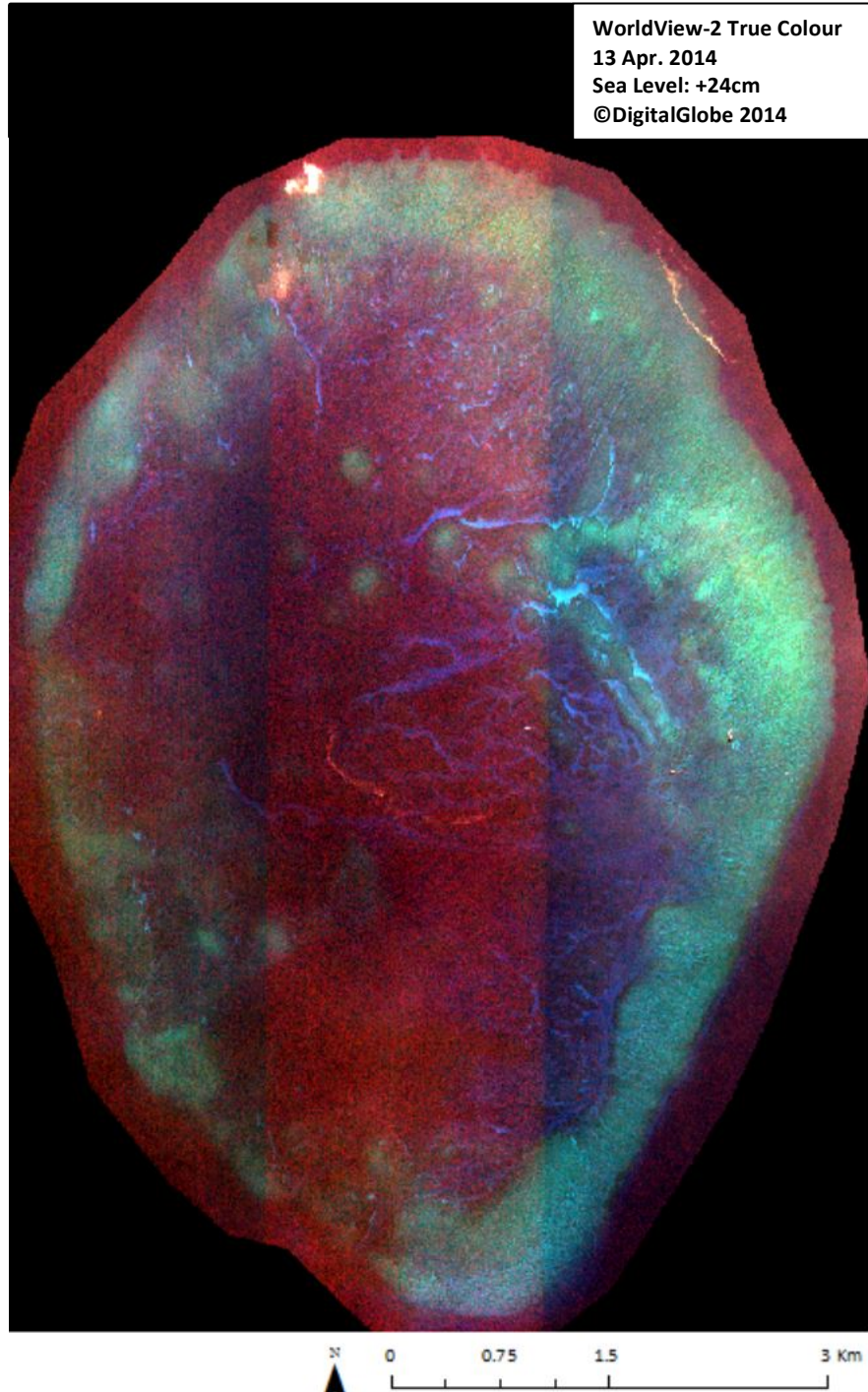
One 15m-wide offshore installation is visible in the 13 April 2014 satellite image. A satellite dish can be observed at the top.

### **Intertidal and submerged area**

This coral reef platform (32.61km<sup>2</sup>) is deeper than most other shallow features in the Spratlys. Its outer edge is 6-8m deep along a band that is 800m to 1km wide on the northwest, north, east and southeast-facing sides of the platform when the sea level is 24cm above Mean Sea Level. The central lagoon covers an area of 18.02km<sup>2</sup> and is more than 10m deep, but its bottom seems to be dominated by coral and is not much deeper than 20m. Pronounced spurs and groves are visible on most of the coral platform.

Traces of human activities are clearly visible on 13 April 2014: one 40m-long vessel next to the offshore platform and two wide barge-like 27m-long

vessels at anchor located southwest and west of the offshore platform; 7 circular holes with a 12m diameter and 4 circular holes with a 6-7m diameter, all organised in a circular pattern and located just 20m southeast of the offshore platform; another hole in the middle of the coral platform; a 20m-long vessel on the northwest of the coral reef platform; and dredging marks on two small areas (4200m<sup>2</sup>).

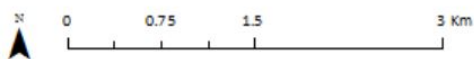
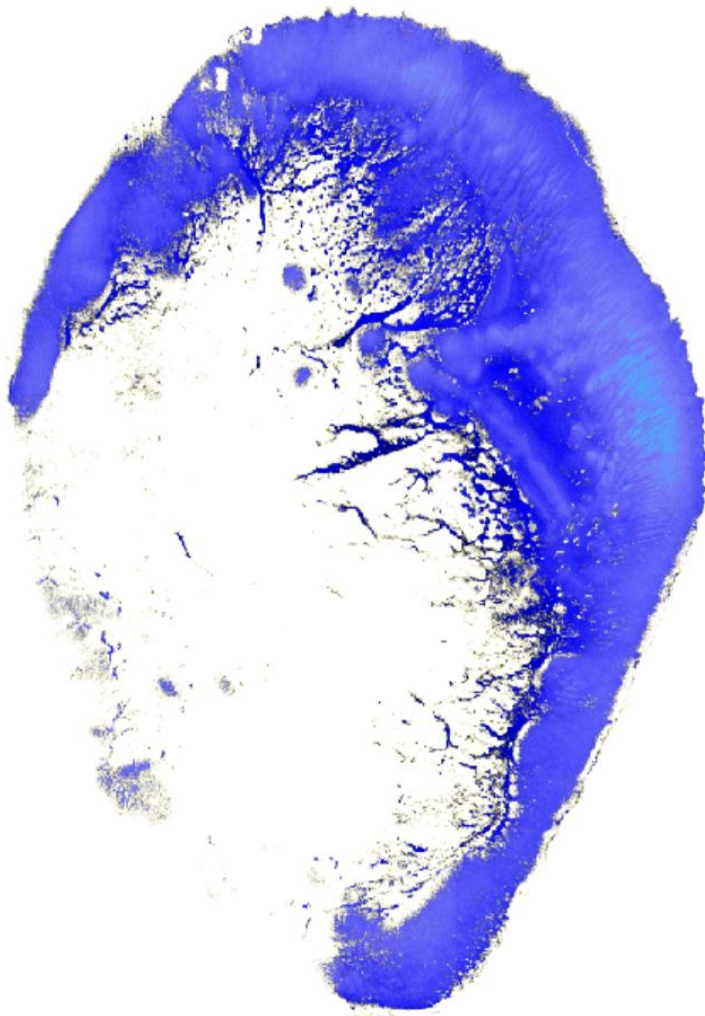


# ALEXANDRA BANK

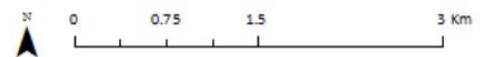
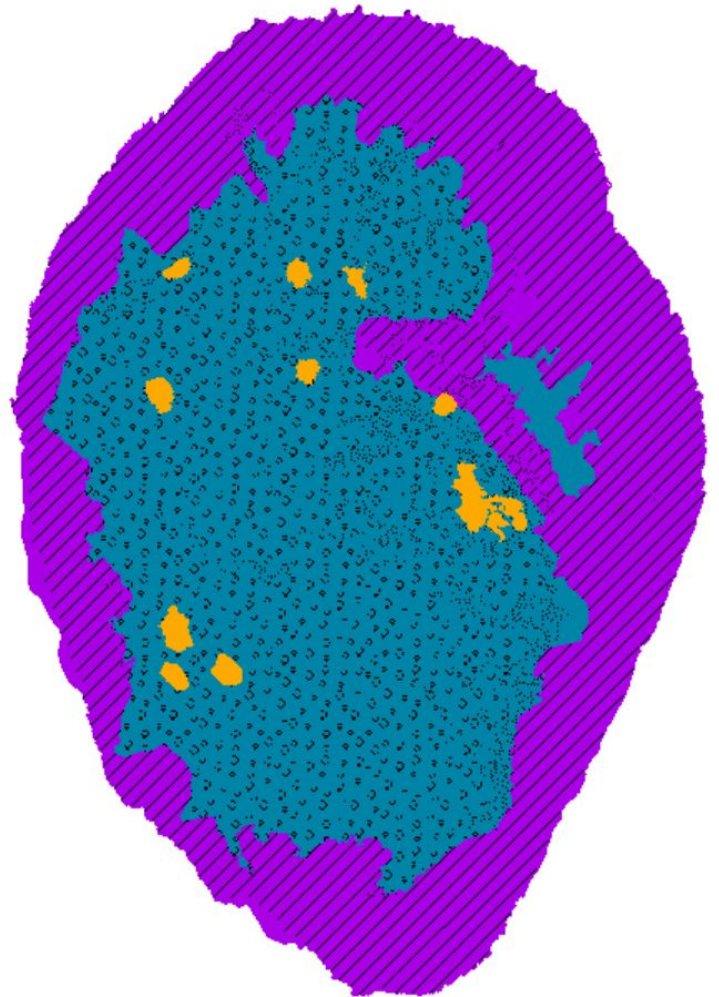
8°01'16.64"N, 110°36'42.03"E

Derived from WorldView-2 satellite data captured on 13 April 2014 [Sea Level: +24cm]

### Bathymetry Map



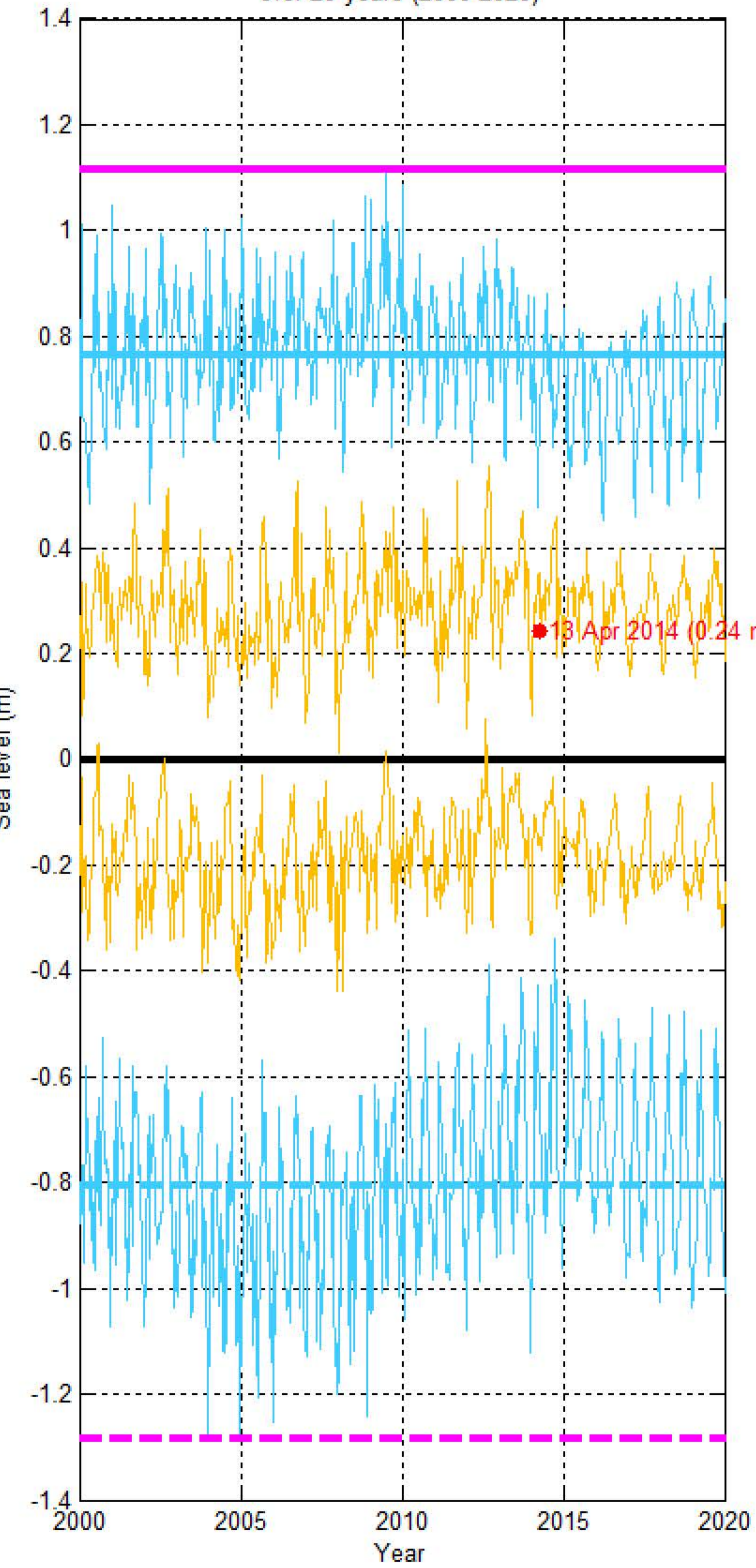
### Habitat Classification and Land Cover Map



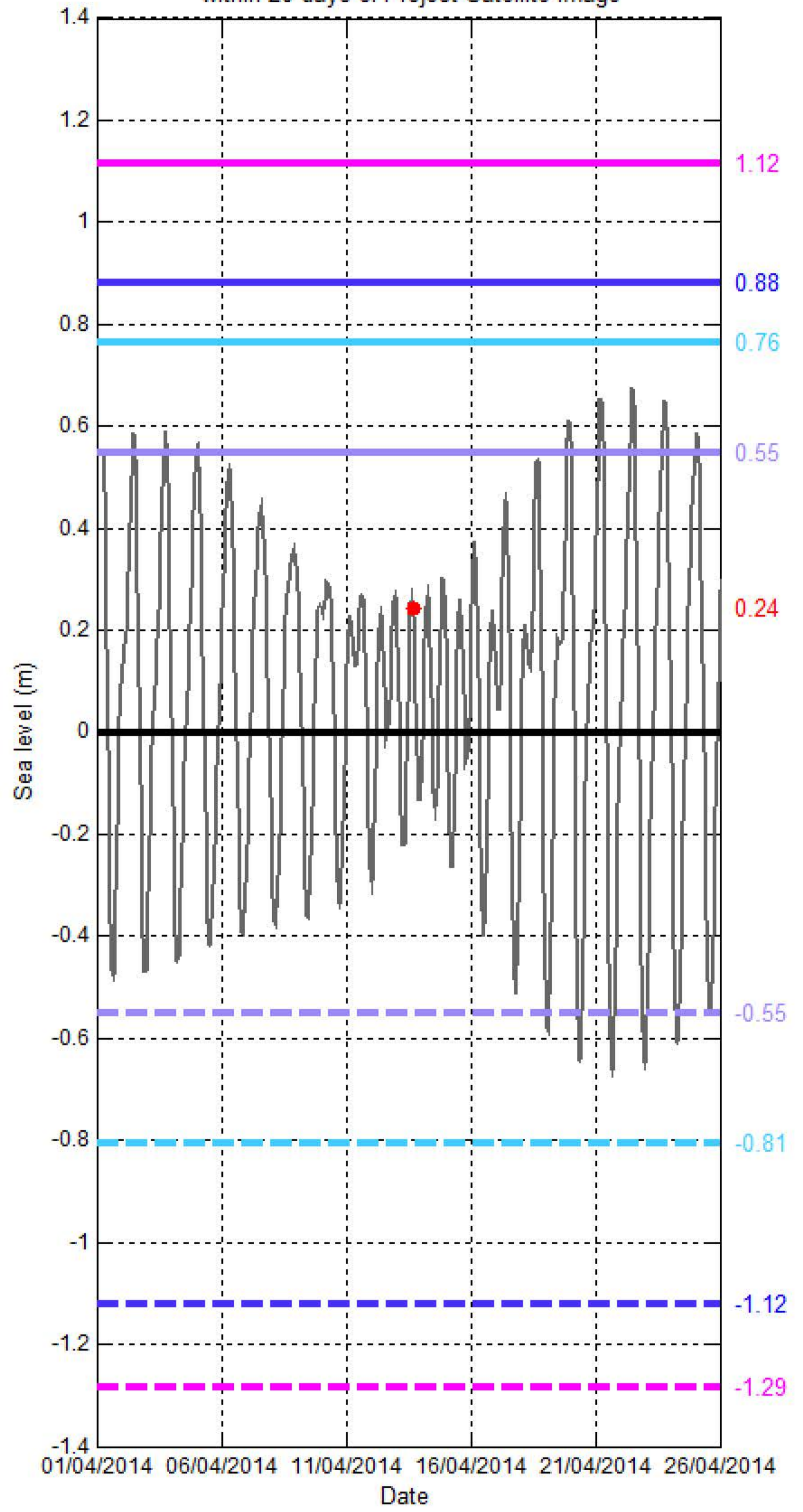
# Sea level (SL) at ALEXANDRA BANK

[8°01'16.64"N, 110°36'42.03"E]

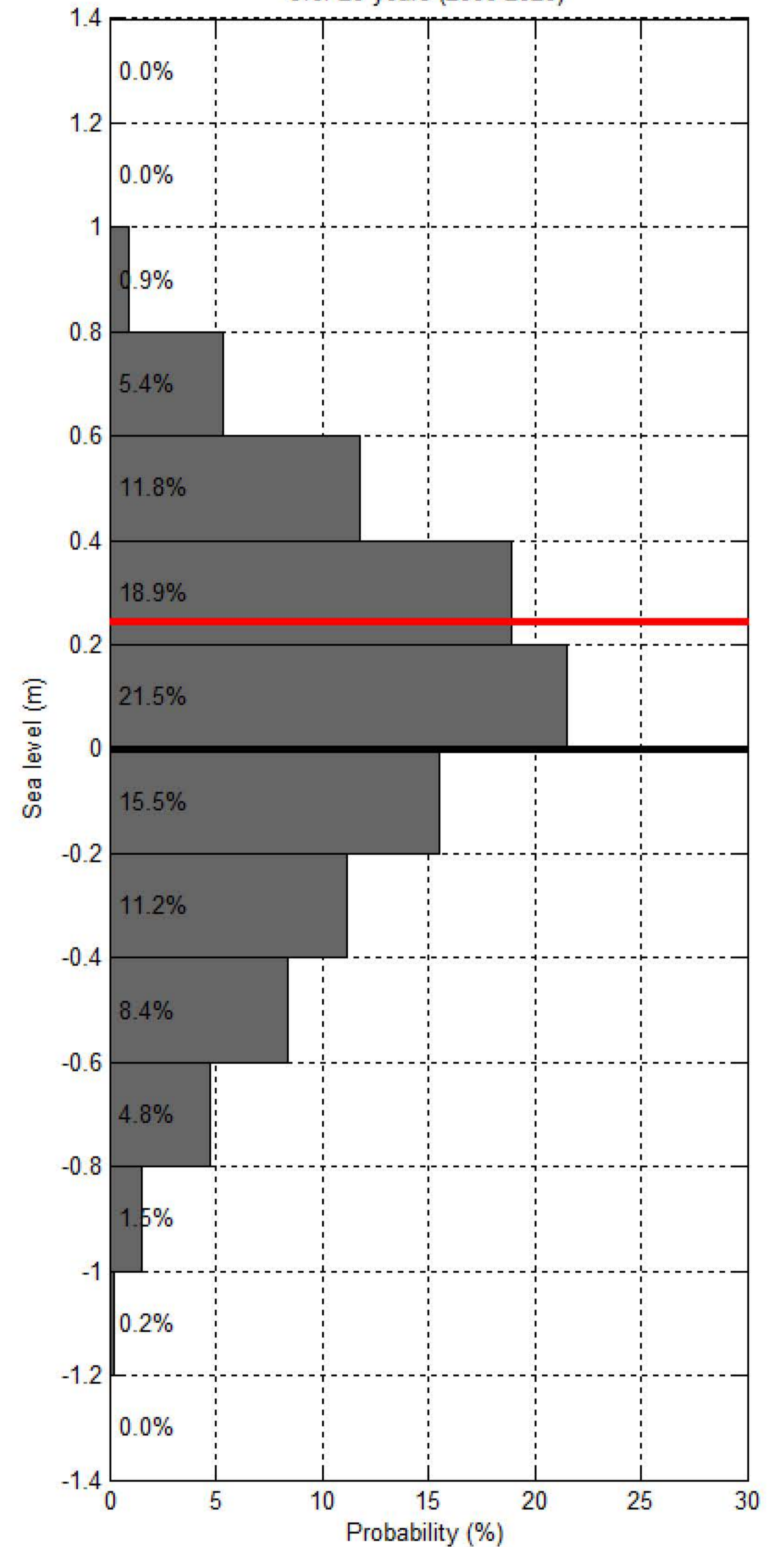
Sea level at spring/neap tide at ALEXANDRA BANK over 20 years (2000-2020)



Sea level at ALEXANDRA BANK within 20 days of Project Satellite Image



Probability of sea level at ALEXANDRA BANK over 20 years (2000-2020)



— Hourly sea level   
 — SL at spring tide   
 — SL at Mean High Water Spring   
 — SL at highest tide of the year   
 — SL at Mean Higher High Water   
 — SL at Highest Astronomical Tide   
 ● Project Satellite Image  
— Mean Sea Level   
 — SL at neap tide   
 — SL at Mean Low Water Spring   
 — SL at lowest tide of the year   
 — SL at Mean Lower Low Water   
 — SL at Lowest Astronomical Tide   
● Google Earth and Landsat satellite images