

HAYES REEF

5°22'11.54"N, 112°37'30.81"E

Geographic area

Hayes Reef is an oceanic coral reef platform that is small and shallow. It is located in the southwest of the Spratlys, 90NM north of the island of Borneo. It is often described as being part of North Luconia Shoals although it is 6NM south of North Luconia Shoals (where Seahorse Breakers is located). Seahorse Breakers is the closest shallow geographic feature at 10NM northwest. This coral reef platform is 1.7km along its northeast-southwest axis and 800m wide at the most along its northwest-southeast axis.

Land area above water

There are no visible above-water land areas on this coral reef platform.

Human infrastructure

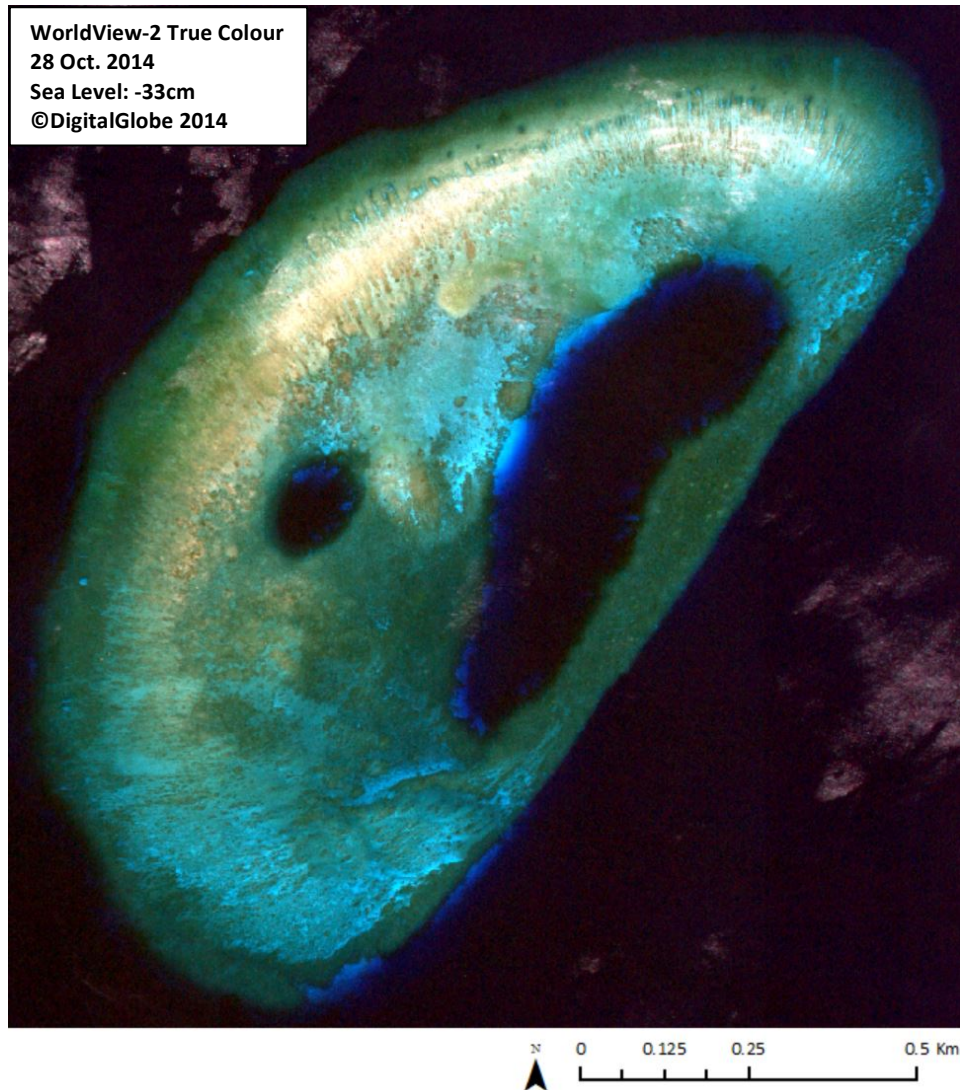
There are no man-made structures visible on this reef as at 28 October 2014.

Intertidal and submerged area

This small reef platform (1.19km²) is relatively deeper than most other shallow features in the Spratlys, being generally more than 2m deep and up to 6m. It comprises a reef flat of 0.40km², two lagoons totaling 0.17km² and a reef slope of 0.61km². On the reef flat, there is one shallow band that is 100m long and 80m wide along the northwest-facing

side of the platform where the water depth is only 1.5-2m. The reef platform slopes down from this area to the southeast-facing side which is deeper. It encloses two deep lagoons (the depth of which could not be calculated): a small circular lagoon southeast of the shallowest area has a diameter of 100-150m; a larger long and oval lagoon that is 800m long by 200m wide is located along the southeast-facing side, separated from the open sea by a 100m-wide coral cordon that is around 6m deep. The outer 10-20m rim of the reef platform is 7-9m deep, suggesting a steep edge to it.

No dredging marks or other clear traces of human activities are visible on this reef as at 28 October 2014.

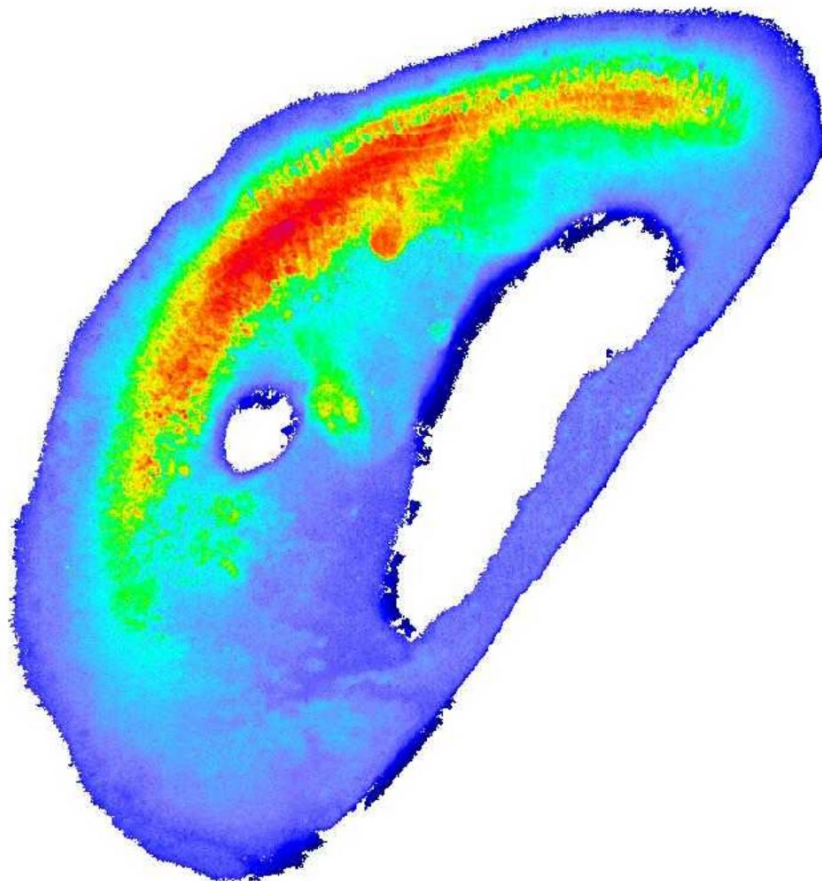


HAYES REEF

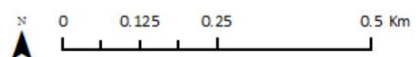
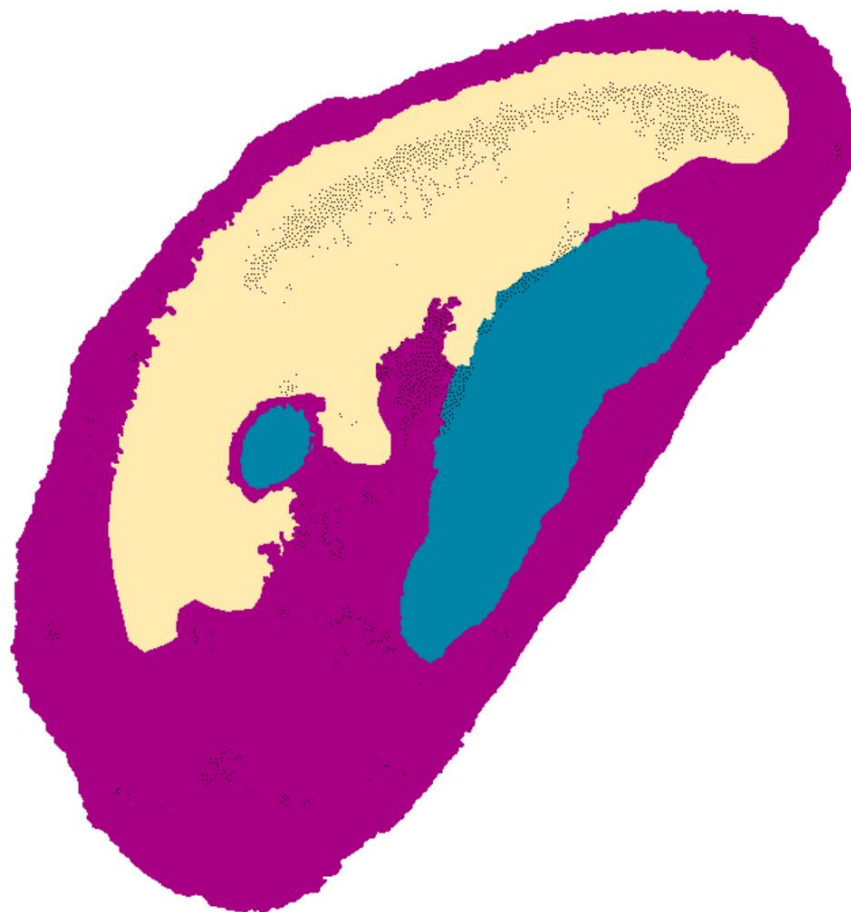
5°22'11.54"N, 112°37'30.81"E

Derived from WorldView-2 satellite data captured on 28 October 2014 [Sea Level: -33cm]

Bathymetry Map



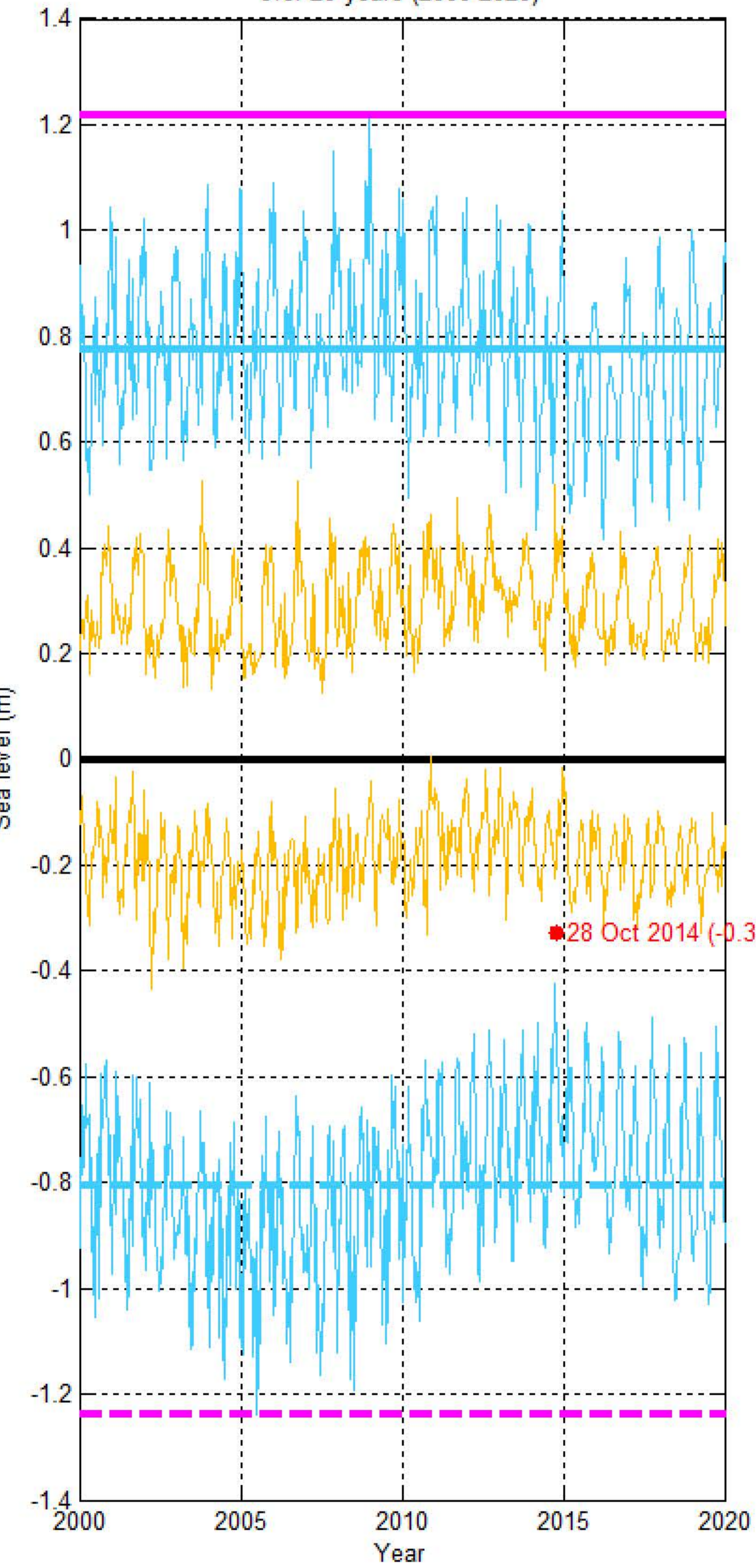
Habitat Classification and Land Cover Map



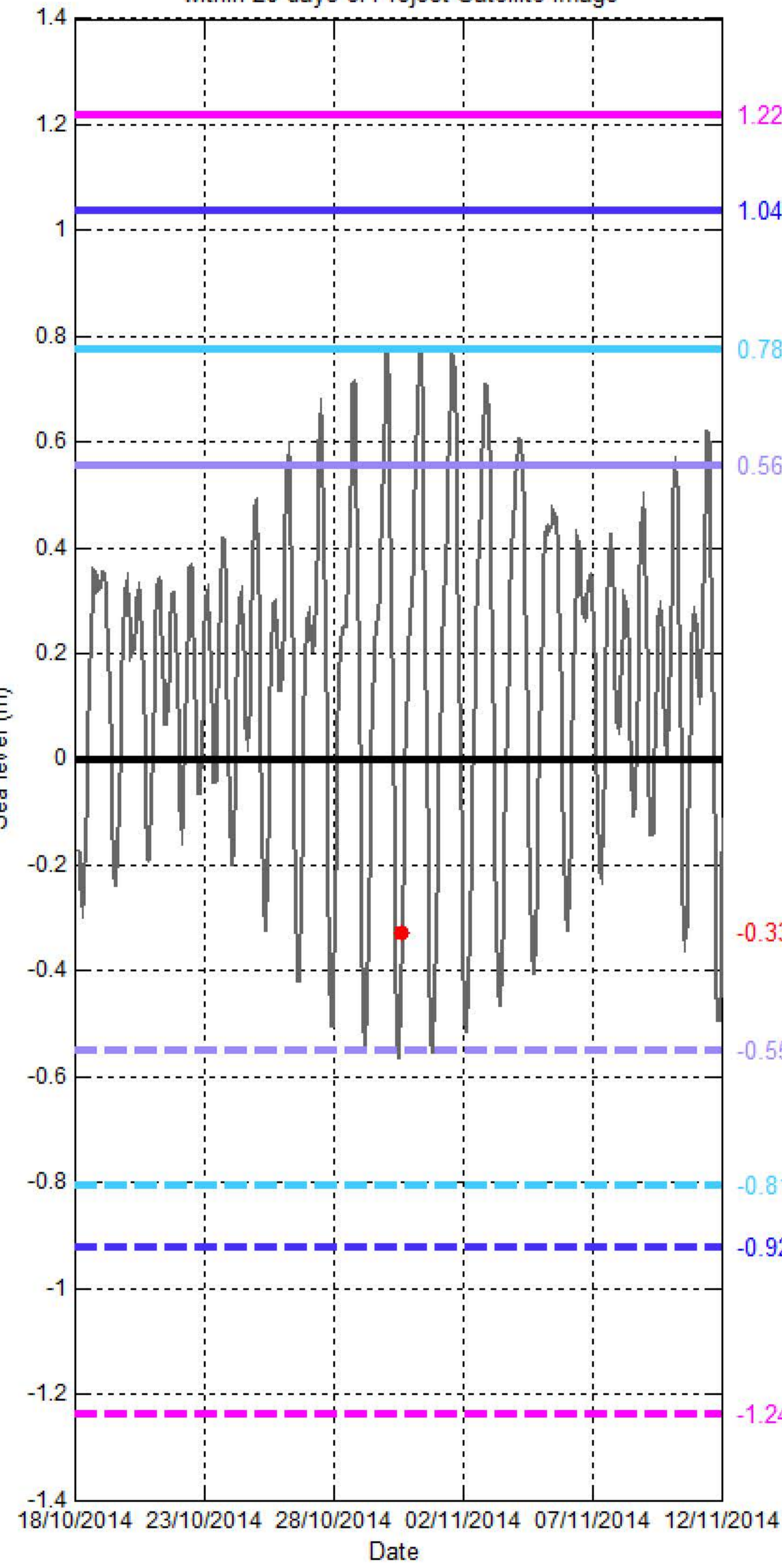
Sea level (SL) at HAYES REEF

[5°22'11.54"N, 112°37'30.81"E]

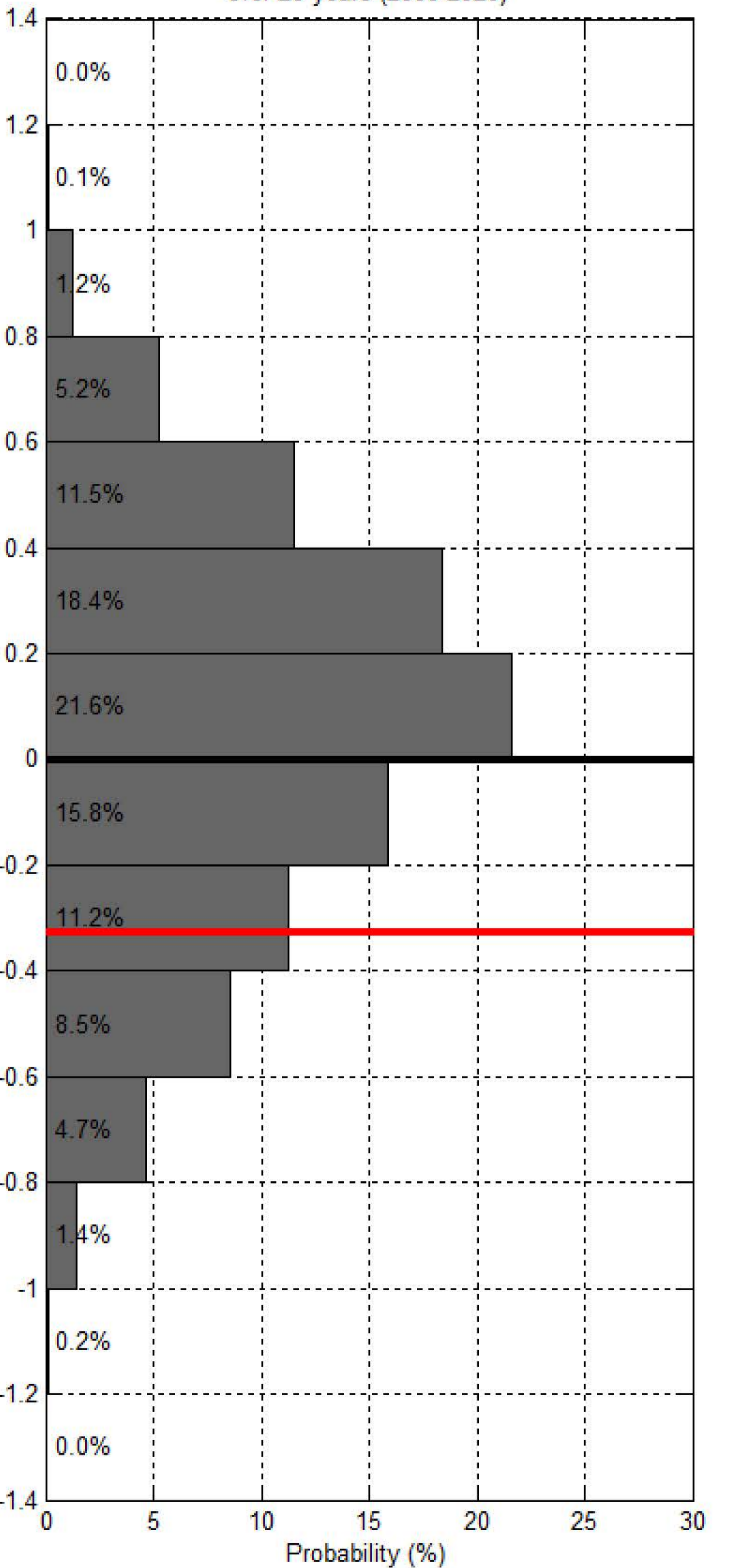
Sea level at spring/neap tide at HAYES REEF over 20 years (2000-2020)



Sea level at HAYES REEF within 20 days of Project Satellite Image



Probability of sea level at HAYES REEF over 20 years (2000-2020)



- Hourly sea level
- SL at spring tide
- SL at Mean High Water Spring
- SL at highest tide of the year
- SL at Mean Higher High Water
- SL at Highest Astronomical Tide
- Project Satellite Image
- Mean Sea Level
- SL at neap tide
- SL at Mean Low Water Spring
- SL at lowest tide of the year
- SL at Mean Lower Low Water
- SL at Lowest Astronomical Tide
- Google Earth and Landsat satellite images