

HOPKINS REEF (REED TABLEMOUNT)

10°48'30.99"N, 116°05'28.58"E

Geographic area

Hopkins Reef is a small, oceanic and shallow coral reef platform located in the northeastern part of the Spratlys, southwest of Reed Tablemount, 140NM northwest of the island of Palawan and over 200NM north of the island of Borneo. The closest shallow geographic features are Baker Reef and Iroquois Reef, which are located less than 7NM and 12NM southeast, respectively; Nares Bank 15 NM north, and Flat and Nanshan Islands 15.5NM and over 17NM west, respectively. The visible part of this coral reef platform is 1.8km long on its north-south axis and less than 800m on its west-east axis. It is unclear whether this coral platform has developed on a part of the very large Reed Tablemount where Baker Reef and Iroquois Reef have developed or whether it has developed on a different seamount.

Land area above water

There are no visible above-water land areas on this coral reef platform.

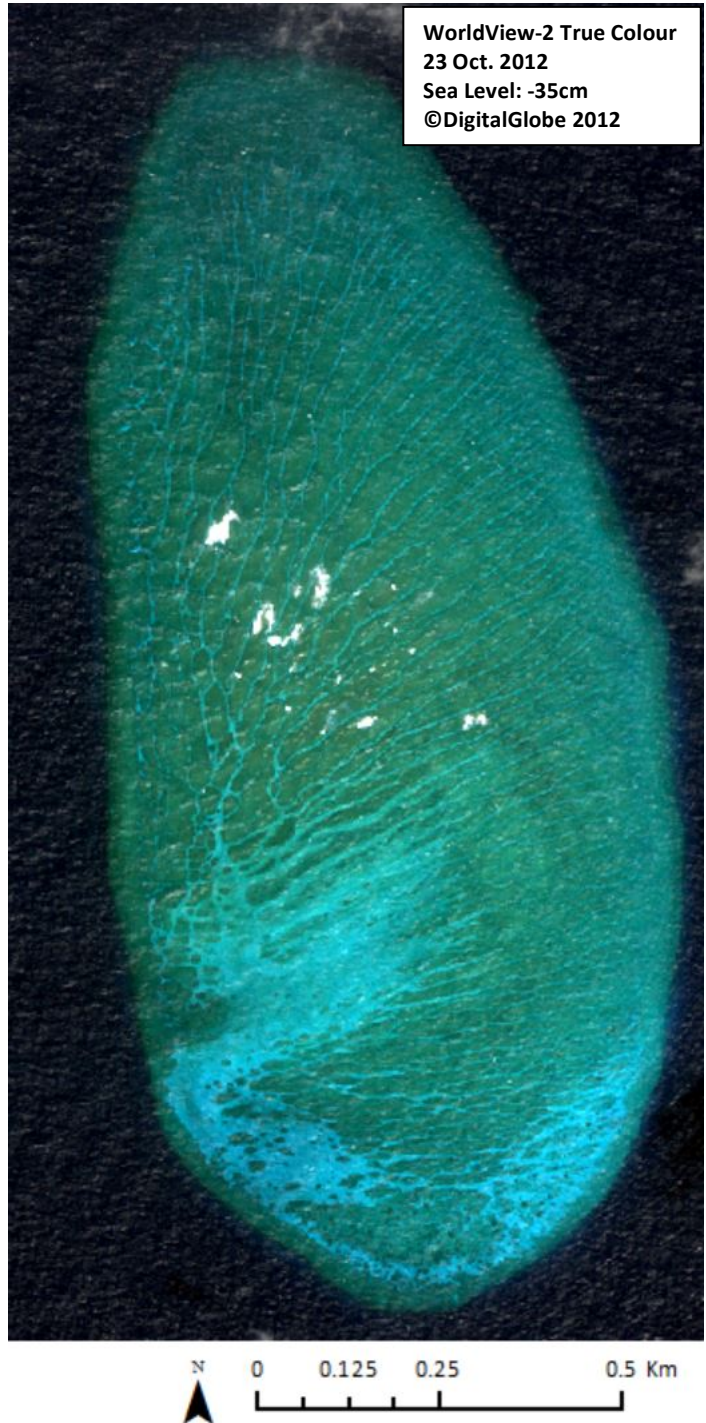
Human infrastructure

There are no visible man-made structures on this reef as at 23 October 2012.

Intertidal and submerged area

This small reef platform (1.13km²) has no reef flat and is deeper than most other shallow features, being 3-7m deep at relatively low tide (0.49m below Mean Sea Level). Pronounced spurs and groves are visible on most of the reef platform that are over 1km along the north-south axis. They cover an area of 0.79km². The grooves are commonly around 1m deep and 2-4m wide. Sandy areas in the south are the deepest, 6-7m deep.

No dredging marks or other clear traces of human activities are visible on this reef as at 23 October 2012.

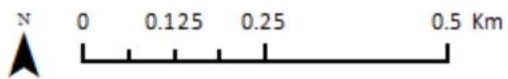
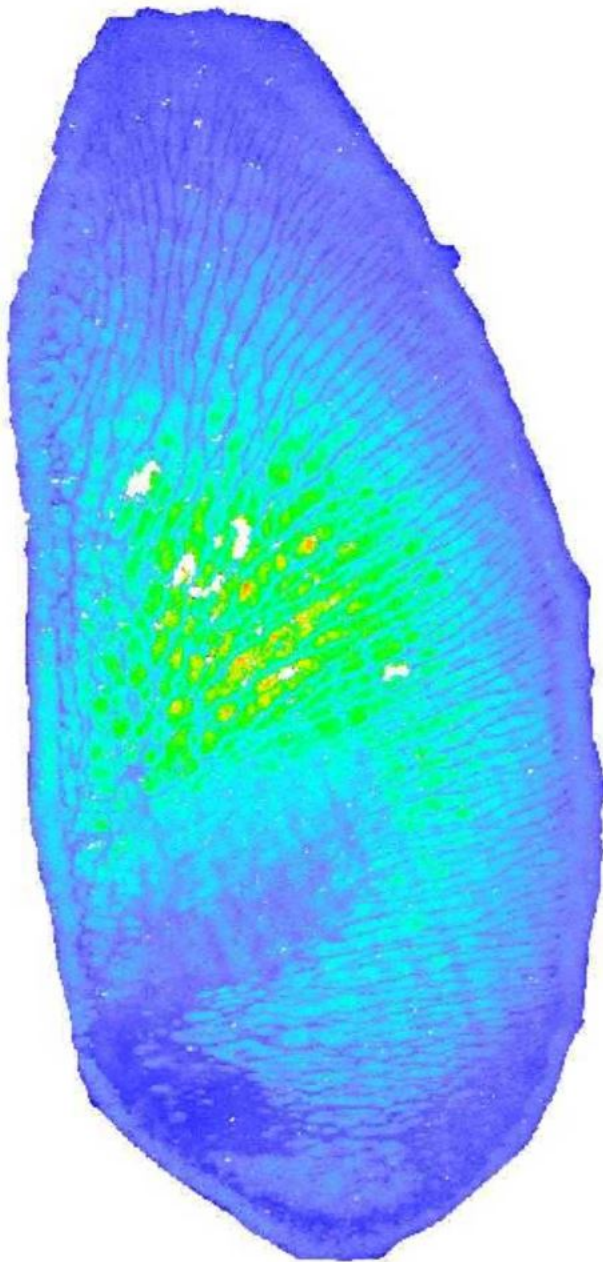


HOPKINS REEF (REED TABLEMOUNT)

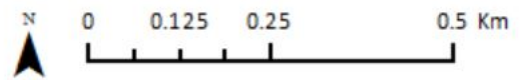
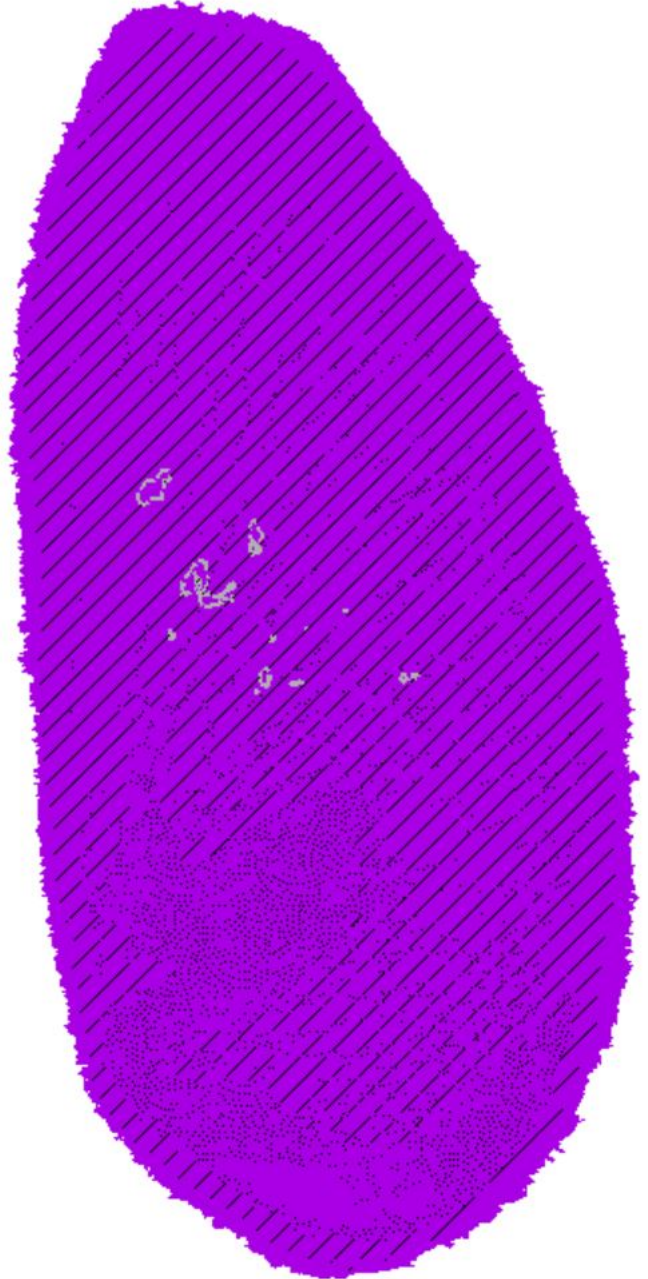
10°48'30.99"N, 116°05'28.58"E

Derived from WorldView-2 satellite data captured on 23 October 2012 [Sea Level: -35cm]

Bathymetry Map



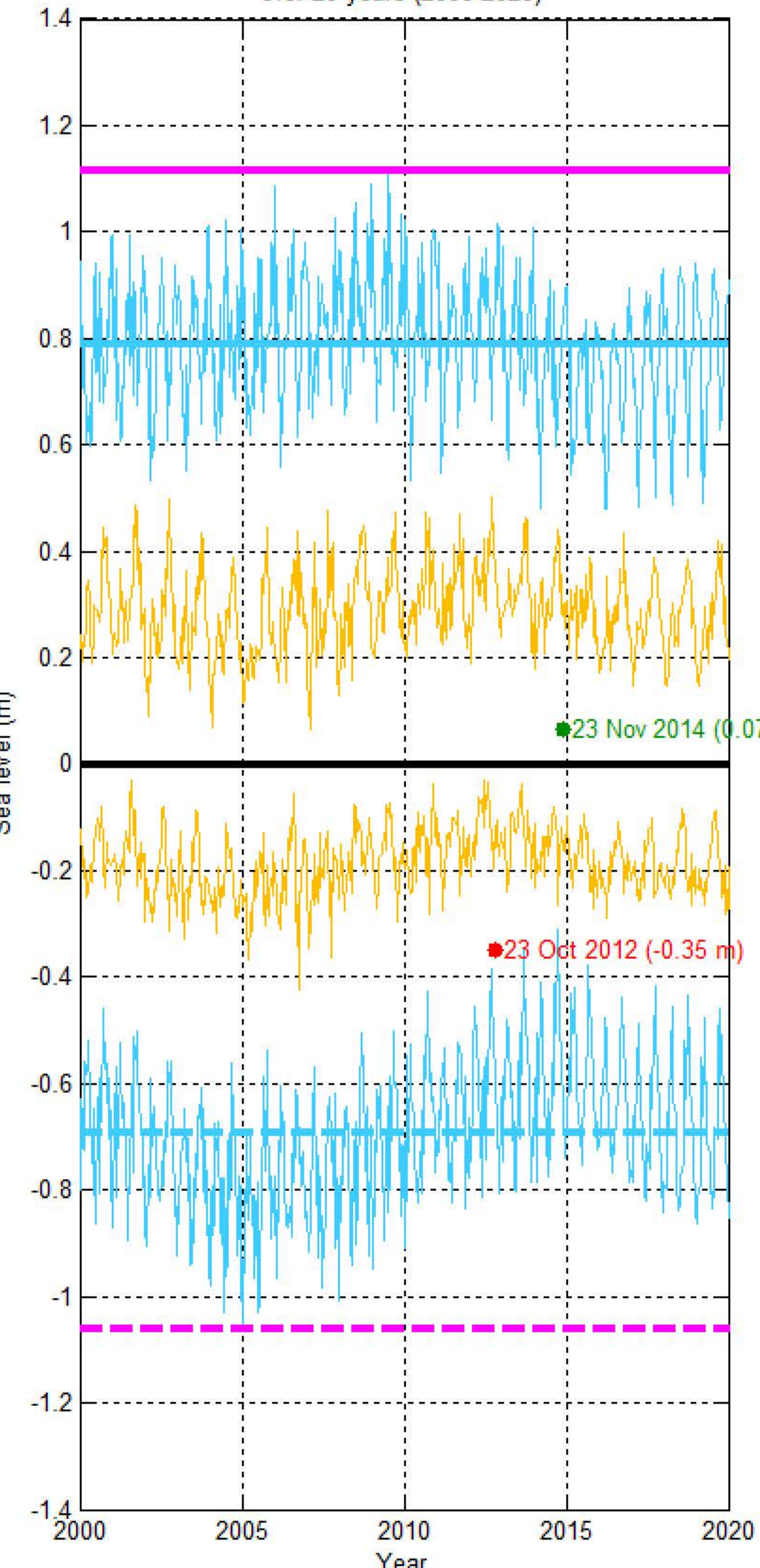
Habitat Classification and Land Cover Map



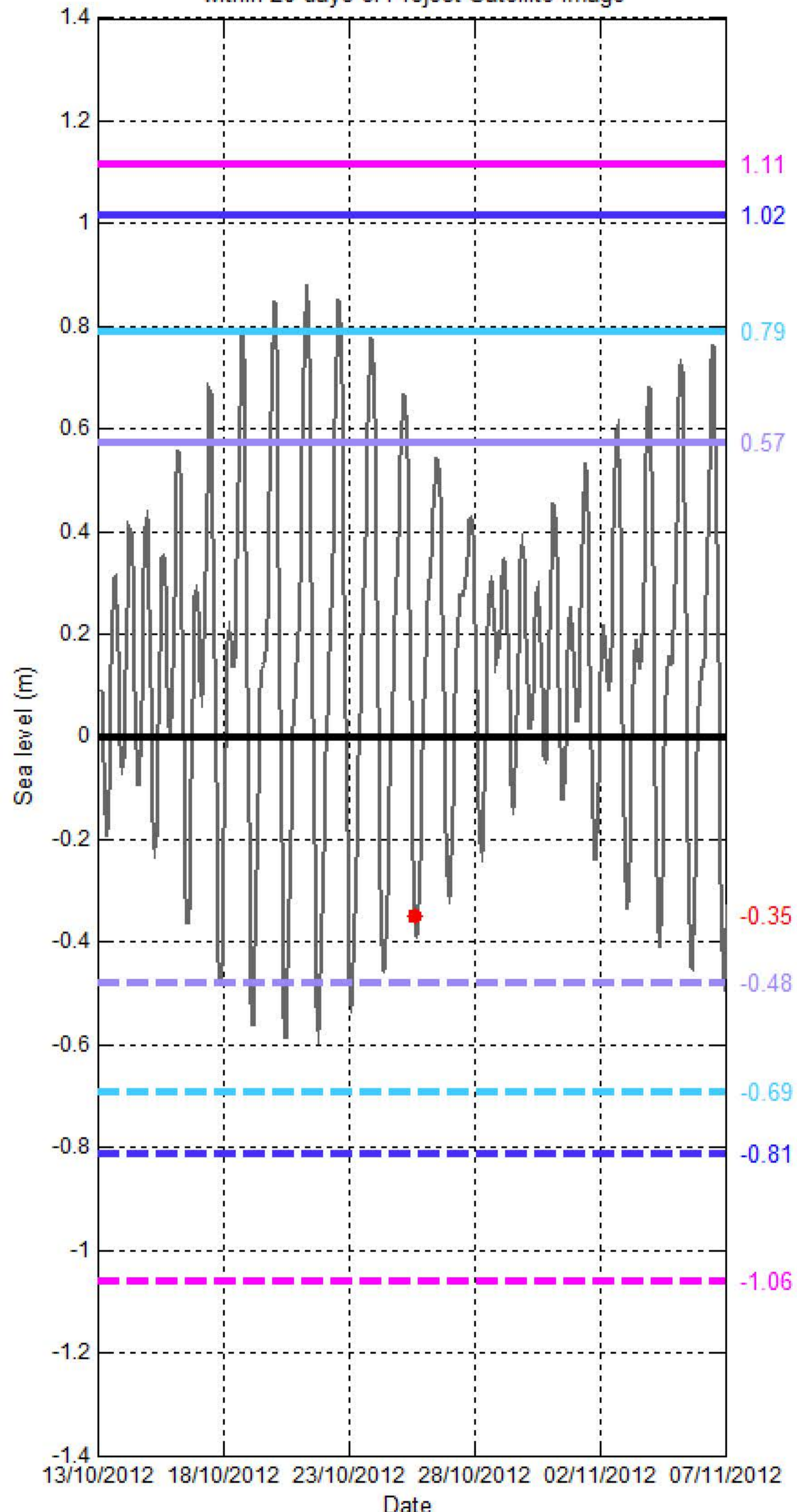
Sea level (SL) at HOPKINS REEF (REED TABLEMOUNT)

[10°48'30.99"N, 116°05'28.58"E]

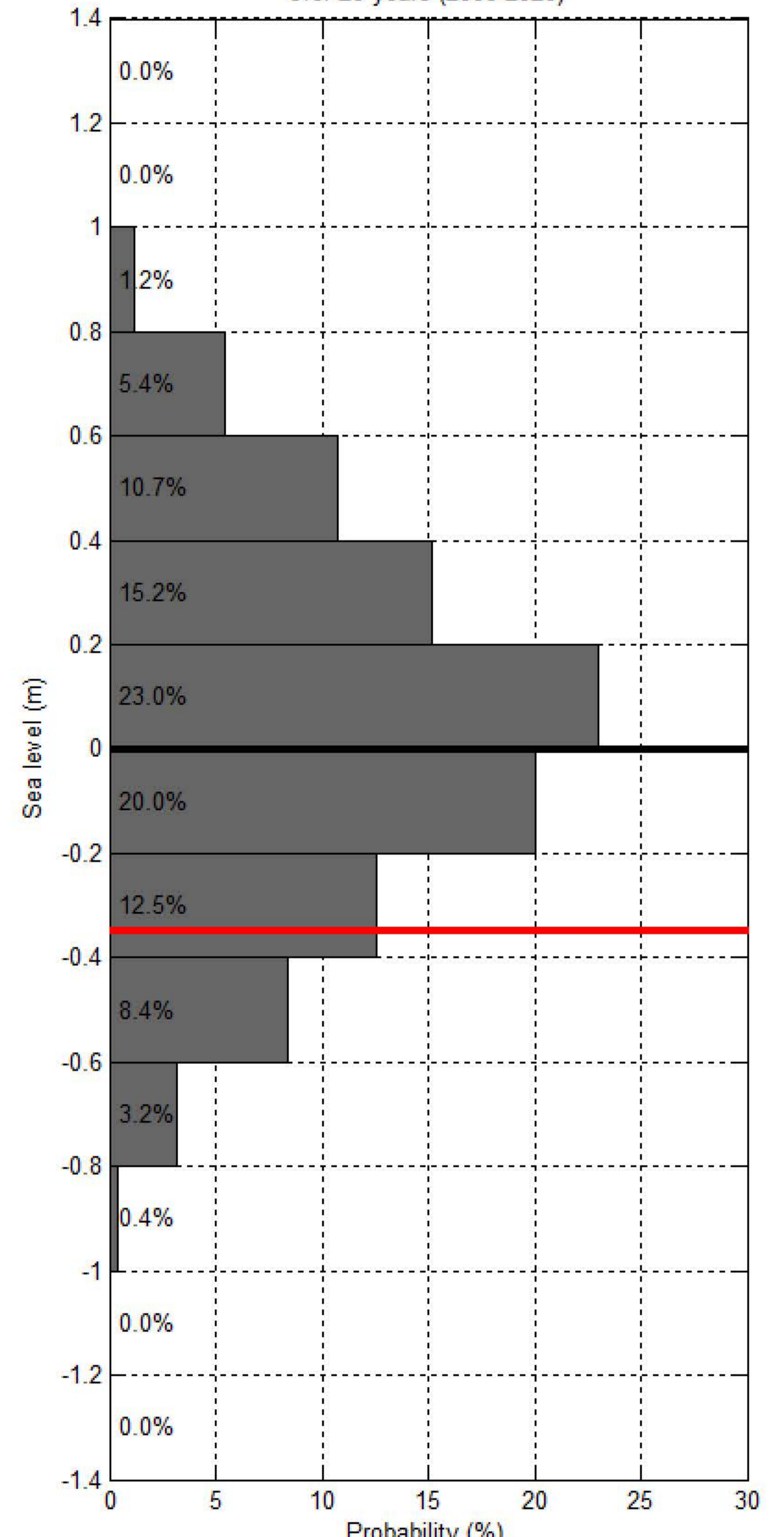
Sea level at spring/neap tide at REED TABLEMOUNT - HOPKINS REEF over 20 years (2000-2020)



Sea level at REED TABLEMOUNT - HOPKINS REEF within 20 days of Project Satellite Image



Probability of sea level at REED TABLEMOUNT - HOPKINS REEF over 20 years (2000-2020)



— Hourly sea level
 — SL at spring tide
 — SL at Mean High Water Spring
 — SL at highest tide of the year
 — SL at Mean Higher High Water
 — SL at Highest Astronomical Tide
 ● Project Satellite Image
— Mean Sea Level
 — SL at neap tide
 — SL at Mean Low Water Spring
 — SL at lowest tide of the year
 — SL at Mean Lower Low Water
 — SL at Lowest Astronomical Tide
● Google Earth and Landsat satellite images