



UNIVERSITY OF  
BIRMINGHAM

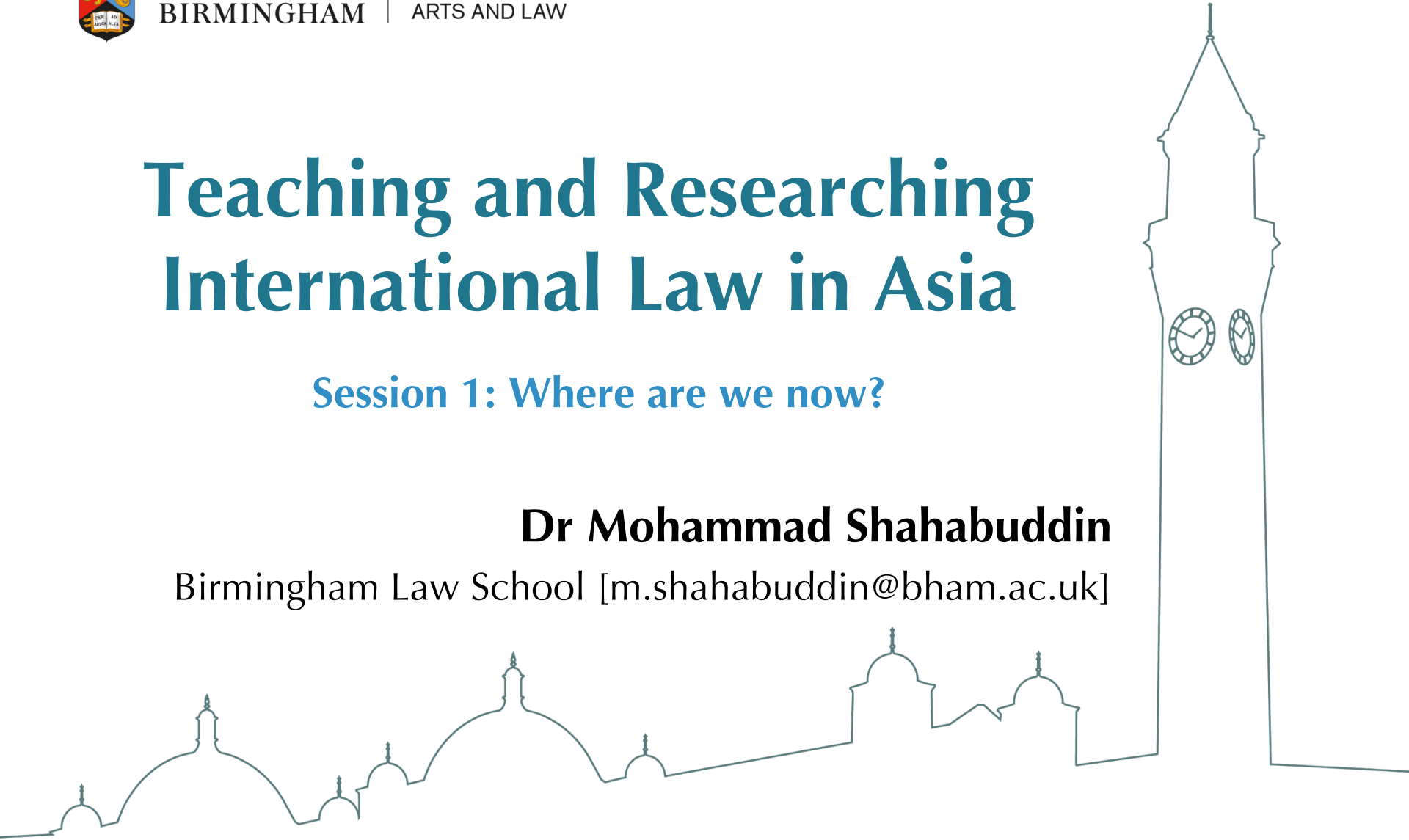
COLLEGE OF  
ARTS AND LAW

# Teaching and Researching International Law in Asia

Session 1: Where are we now?

**Dr Mohammad Shahabuddin**

Birmingham Law School [[m.shahabuddin@bham.ac.uk](mailto:m.shahabuddin@bham.ac.uk)]



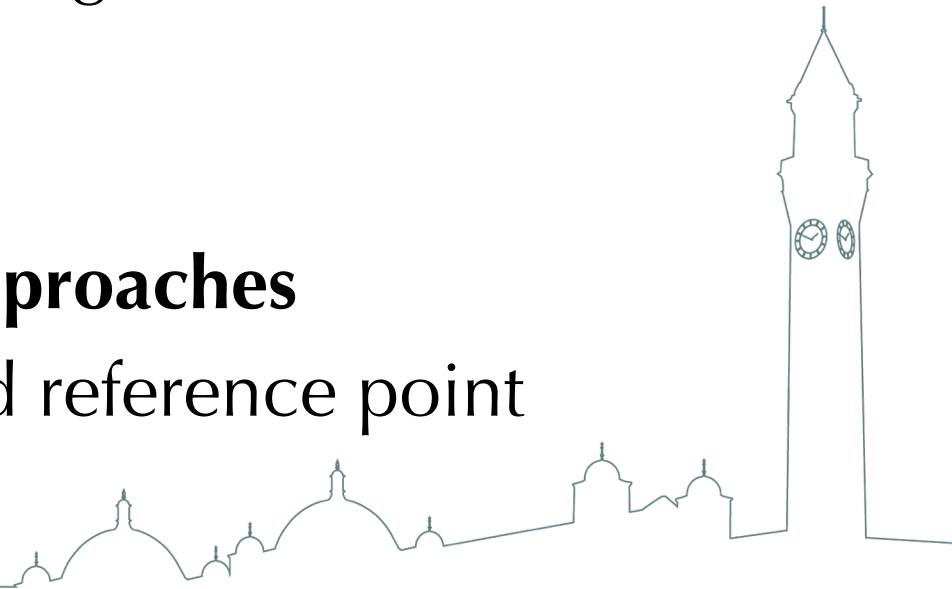
# [Outdated] Personal Reflections

## □ The Vision of Law

- A heavily guarded territory and professional identity
- Law as a problem solving ‘tool’
- A colonial ‘gift’

## □ The Limits of Critical Approaches

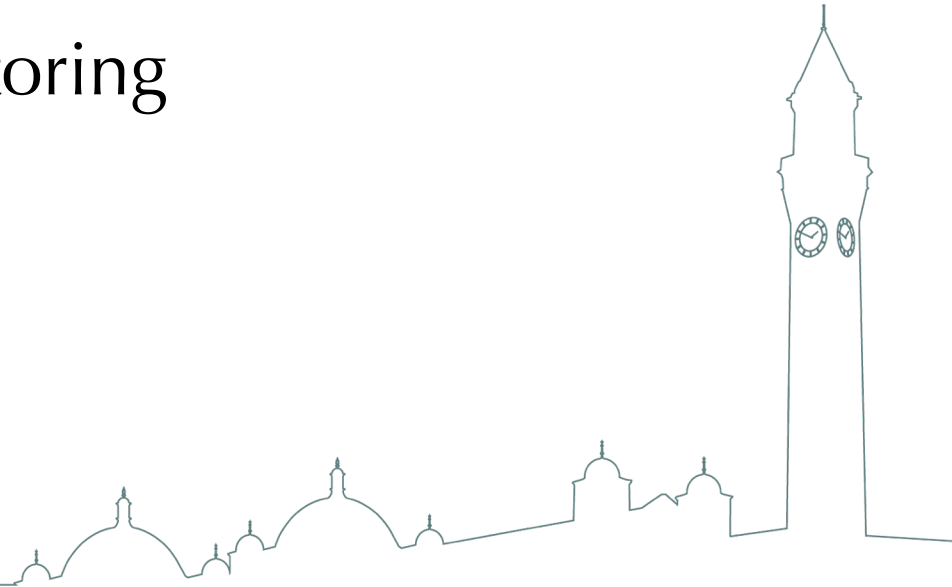
- Europe as the standard reference point



# [Outdated] Personal Reflections

## □ Challenges

- Resources
- Community
- (Academic) culture
- Lack of adequate mentoring
- Institutional structure



# [Outdated] Personal Reflections

## □ Opportunities

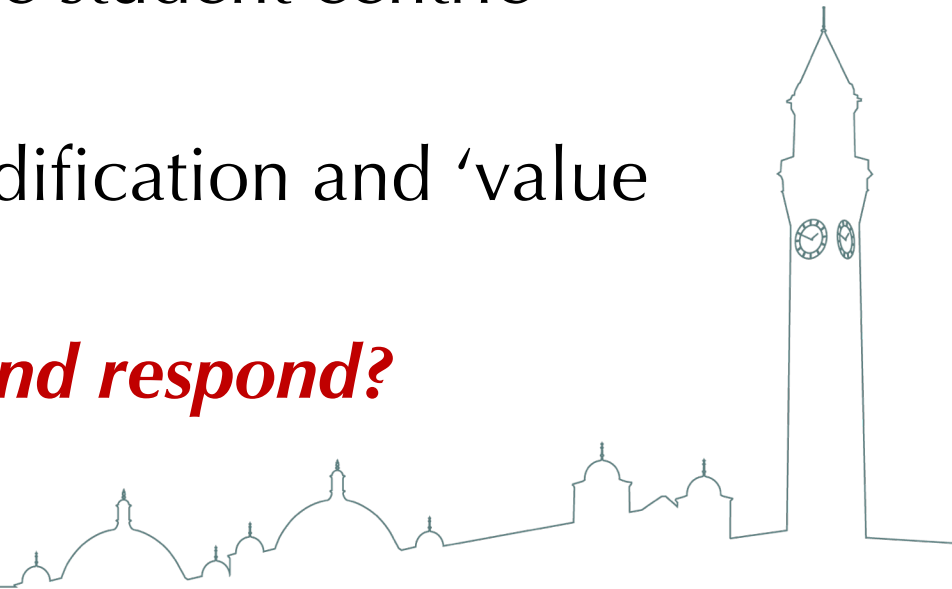
- Challenge-driven resilience and competitiveness
- Unique Third World experience and worldviews
- Increasing opportunities at the regional and international level
- Technology and knowledge sharing



# Current Trends in the North

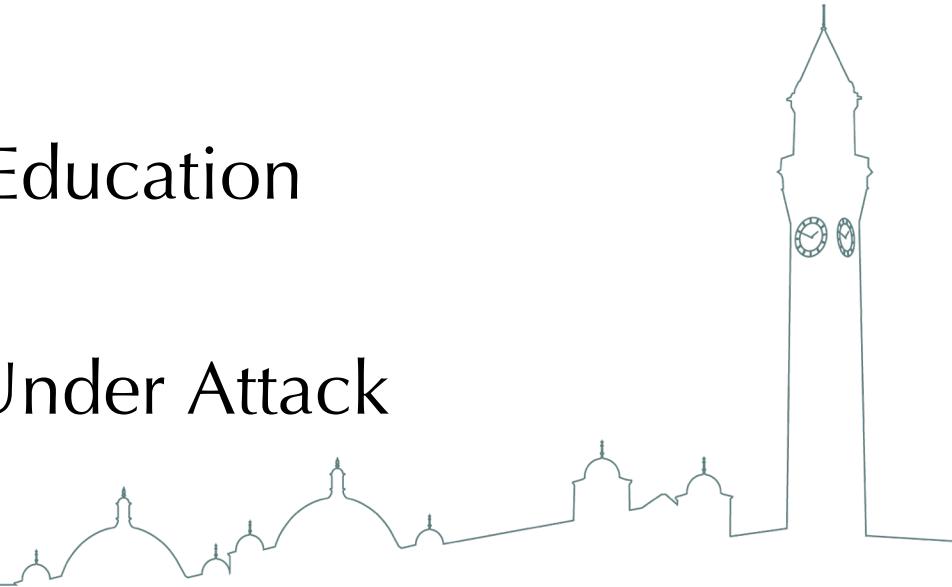
- ❑ Increasing relevance of Third World perspectives
- ❑ 'We have our TWAIL guy' syndrome
- ❑ Research impact & ODA
- ❑ Teaching: more and more student centric pedagogy
- ❑ The wrong turn: commodification and 'value for money' phenomenon

***How should 'we' engage and respond?***



# New Challenges for the South

- ❑ Profit Making Ventures / Economic Sustainability
- ❑ Penetration of IFIs in Higher Education
- ❑ Market-oriented Higher Education
- ❑ Institutional Autonomy Under Attack



# Higher Education Quality Enhancement Project (HEQEP)

- Promoting academic innovation;
- Building institutional capacity;
- Raising the connectivity capacity of the higher education sector;
- Establishment of quality assurance mechanisms.



# International Collaboration

## □ Research Funding

- Global Challenges Fund

## □ PhD Research Funding

- Distance learning

## □ Collaborative Curriculum Development

- Formal and informal networking





# **[More Important]** Local/Regional Collaboration

☐ **Build**

☐ **Lead**

☐ **Share**

