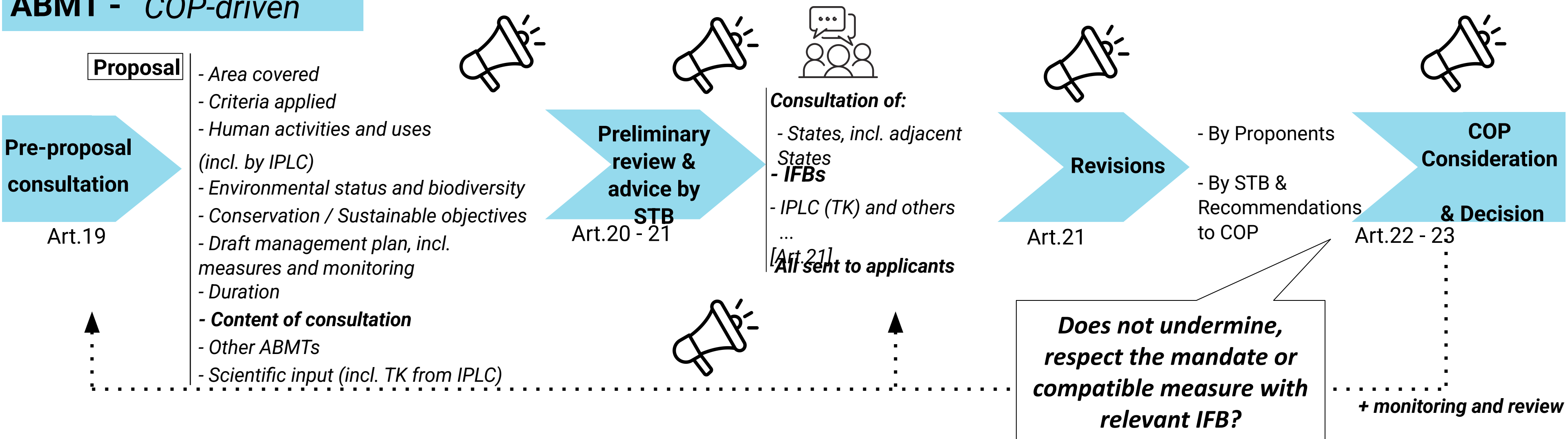
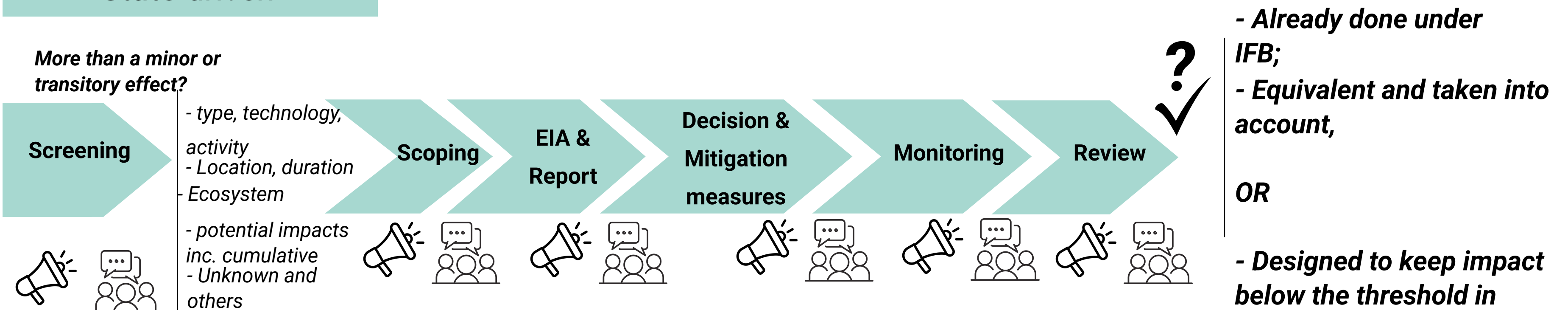


# Entry points for consultation and coordination with IFBs in ABMT and EIA processes

## ABMT - COP-driven

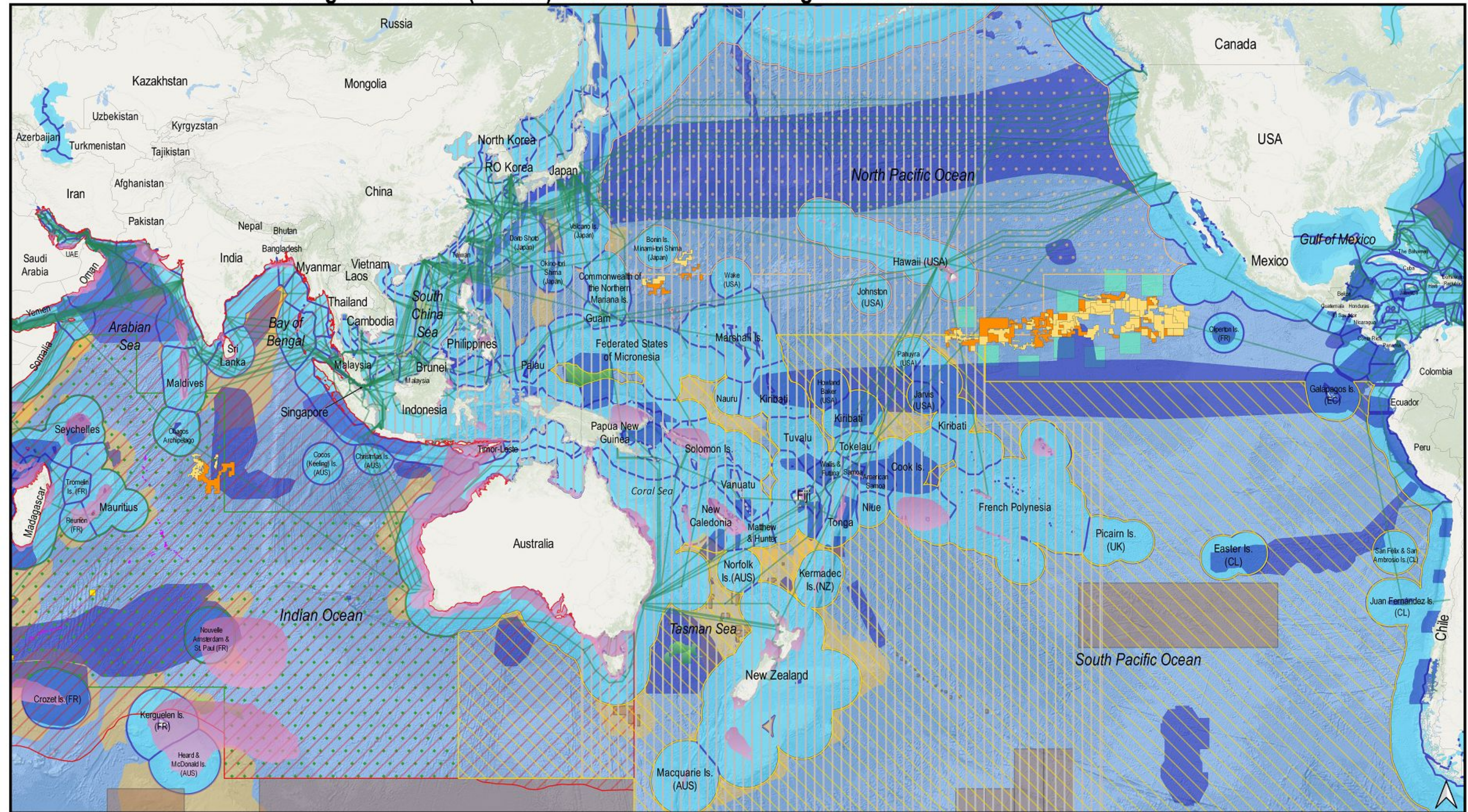


## EIA - State-driven





## Area-based Management Tools (ABMTs) and Area-based Planning Tools in the ABNJ of the Indian and Pacific Oceans



Legend:

- |   |  |   |   |   |  |   |   |
|---|--|---|---|---|--|---|---|
|  | Areas of High Seas and seabed beyond national jurisdiction   |  | Indicative path of submarine cables, as depicted by TeleGeography (TeleGeography.com)                       |  | Areas of Particular Environmental Interest, as designated by ISA (isa.org) |  | SIOFA Vulnerable Marine Ecosystem closed areas      |
|  | Land-ward area of the 200NM limit, as depicted by Marine Regions (marineregions.org)   |  | Polymetallic sulphides exploration areas, as depicted by ISA (isa.org)                                      |  | SIOFA access regulated areas   |  | SPRFMO Bottom fishing areas (including exploratory) |
|  | Baseline and outer Exclusive Economic Zone Boundaries, or 200NM limit from the nearest land, as depicted by Marine Regions (marineregions.org) |  | Polymetallic nodules (PMN) exploration areas, as depicted by International Seabed Authority (ISA) (isa.org) |  | SPRFMO access regulated area   |  | BirdLife Important Bird Areas                       |
|   |  |  | PMN reserved areas, as depicted by International Seabed Authority (ISA) (isa.org)                           |  | NPFC access regulated area   |  | IUCN Important Marine Mammal Area                   |

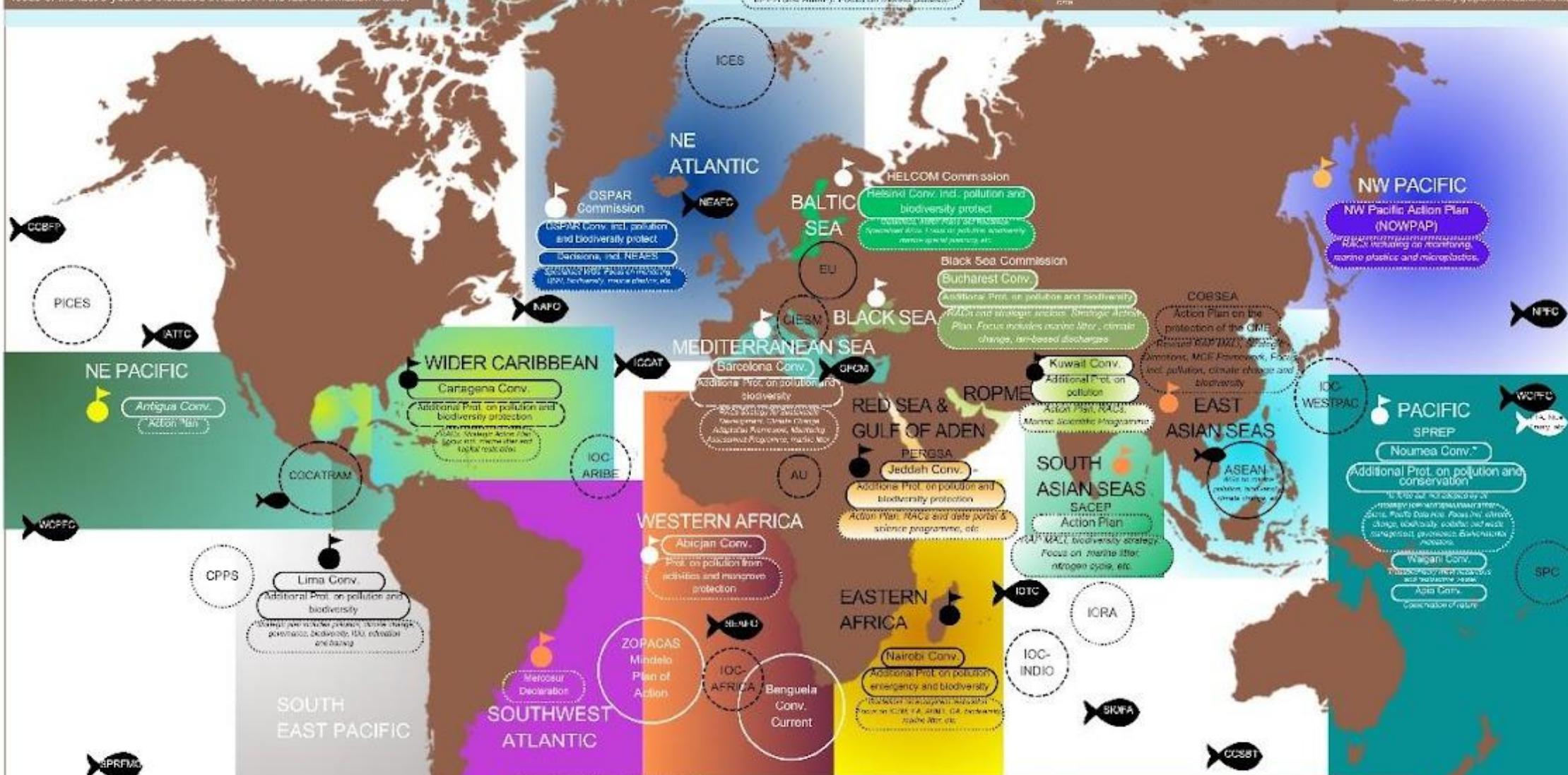


# REGIONAL SEA AREAS OF THE WORLD: LEGAL AND INSTITUTIONAL GOVERNANCE FRAMEWORKS

Overview of primarily intergovernmental regional seas institutional and legal frameworks, including those that were established by UNEP, some of which are also still administered by UNEP. Represented instruments and processes focus on the protection of the marine environment. Where publicly available, focus of the last 5 years is indicated in *italics* in the last information frame.

**Legends**

- Binding instrument: List of dates applies that it can not remain the focus.
- Binding instrument: List of dates applies that it can not remain the focus.
- Binding instrument: List of dates applies that it can not remain the focus.
- Binding instrument: List of dates applies that it can not remain the focus.
- Regional sea management organizations: List of dates applies that it can not remain the focus.
- Regional sea management organizations: List of dates applies that it can not remain the focus.



## Acronyms for intergovernmental bodies

AMAP Arctic monitoring and assessment programme  
ICES International Council for the Exploration of the Sea  
CPPS Convention for the Protection of the Mediterranean Sea  
CCAMLR Convention for the Conservation of Antarctic Living Resources  
CCAS Convention for the Conservation of Antarctic Seals  
COBSEA Convention for the Conservation of Antarctic Seals  
EPPR European Polar Programme

IOC IOC-ARIBE  
IOC-WESTPAC  
IOA  
NEAFC  
PAM  
PICES

Intergovernmental Oceanographic Commission  
ICZM International Council for the Exploration of the Sea  
ROPME Regional Organisation for the Protection of the Marine Environment  
SCAR Scientific Committee on Antarctic Research  
SPC South Pacific Commission  
SPREP South Pacific Regional Environment Programme  
ZOPACAS Zonal Plan of Action

Regional organization for the protection of the marine environment  
COBSEA Convention for the Conservation of Antarctic Seals  
CCAMLR Convention for the Conservation of Antarctic Living Resources  
CCAS Convention for the Conservation of Antarctic Seals  
COBSEA Convention for the Conservation of Antarctic Seals  
EPPR European Polar Programme

Common Acronyms in marine policy used below:  
AMAP Arctic monitoring and assessment programme  
COBSEA Convention for the Conservation of Antarctic Seals  
CCAMLR Convention for the Conservation of Antarctic Living Resources  
CCAS Convention for the Conservation of Antarctic Seals  
COBSEA Convention for the Conservation of Antarctic Seals  
EPPR European Polar Programme

RAIP Regional Action Plan  
RAIP MALI MALI Regional Action Plan  
RAC Regional Action Plan  
WGs Working Groups