



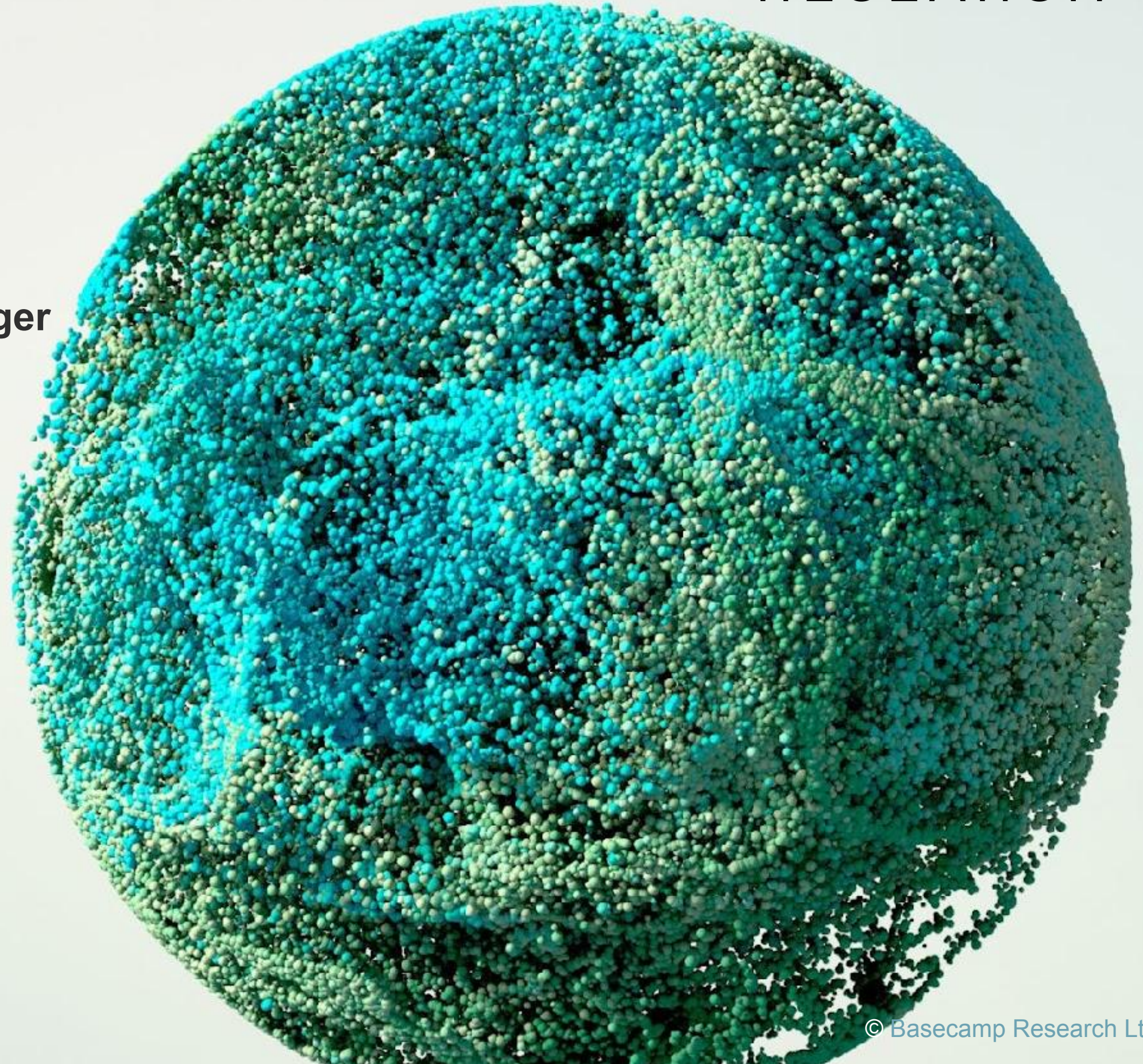
BASECAMP
RESEARCH

Bupe Mwambingu, Biodiversity Partnerships Manager

BIODISCOVERY + BIO-INNOVATION

**How Basecamp Research works
with Communities to Create
A Digital Twin of the Natural World**

basecamp-research.com



© Basecamp Research Ltd

malta

Collaboration

A pioneering marine partnership

BCR BASECAMP
RESEARCH

 **frontiers**
in Marine Science

Deepening the Understanding of Wreck Ecology sites

A comparative study of marine sediment
microbiomes across 10 Malta wreck sites

By Emma Bolton et al.

*"At these depths, there are also significant
changes in oxygen levels and pressure; these
factors can contribute to a shift in microbial
communities and metabolic pathways, providing
insights into the adaptation and evolution of
microorganisms."*



BCR BASECAMP
RESEARCH

© Basecamp Research Ltd - Proprietary

malta

Collaboration

A pioneering marine partnership

Location: Wreck sites within Maltese jurisdiction.

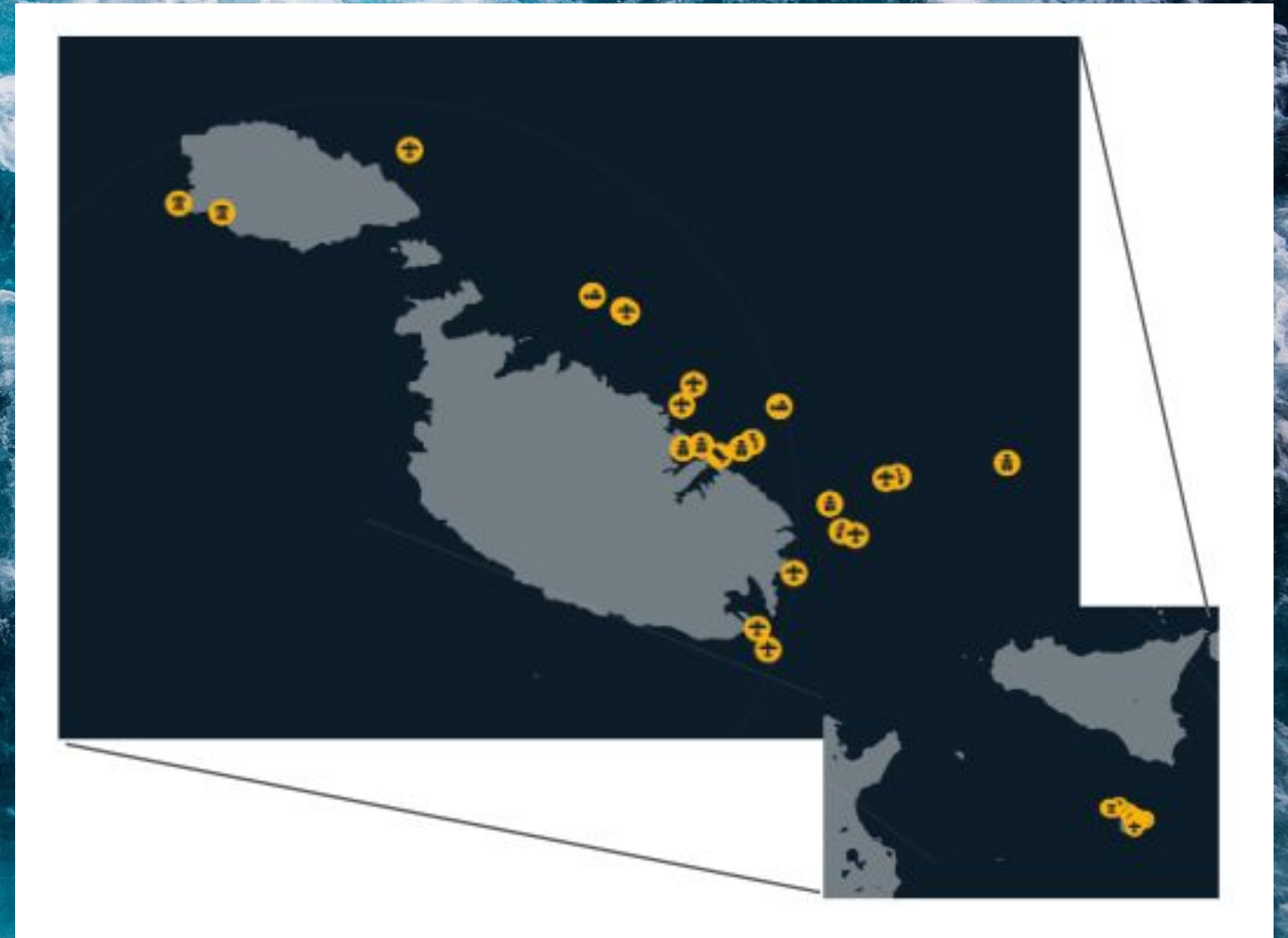
Number of wrecks sampled: 10

Number of samples: 77

Depths of wreck sites: 5m - 99m on the seabed

Number of wrecks with buried arms / UXO: 5

Associated metadata taken: pH, water temperature, TDS, salinity, conductivity, chemical composition, wreck composition.



BRITISH ANTArctic survey

Collaboration

A pioneering access and benefit-sharing partnership

- Deploy a mobile DNA laboratory to the research station in Antarctica.
- Train students & staff in sampling and in the use of the DNA laboratory.
- Data feedback as samples collected, reactive sampling to tailor research projects.



BRITISH ANTArctic survey

Collaboration

A pioneering access and benefit-sharing partnership

 **BMC** Part of Springer Nature

 **Environmental Microbiome**

[Home](#) [About](#) [Articles](#) [Collections](#) [Submission Guidelines](#)

[Submit manuscript](#) 

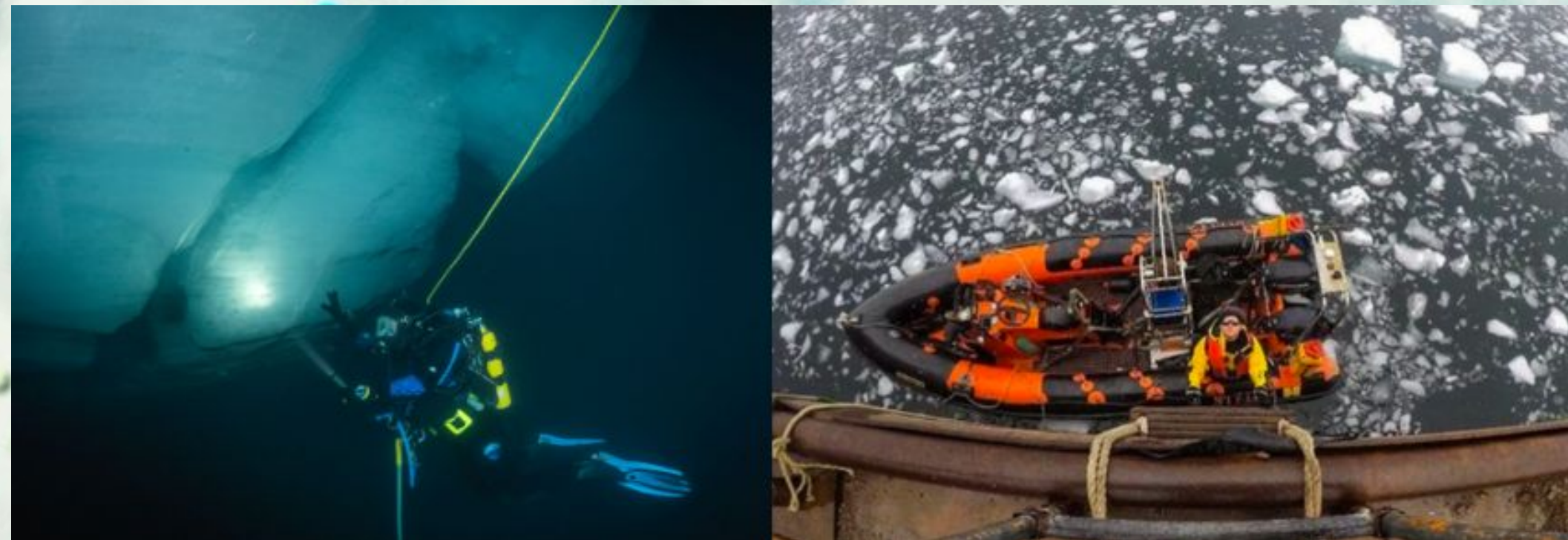
Research | [Open access](#) | Published: 20 January 2025

Assessing the impact of sewage and wastewater on antimicrobial resistance in nearshore Antarctic biofilms and sediments

[Melody S Clark](#) , [Benjamin H Gregson](#), [Carla Greco](#), [Harisree Paramel Nair](#), [Marlon Clark](#), [Claire Evans](#), [Kevin A. Hughes](#), [Kudzai Hwengwere](#), [Marcus Leung](#), [Lloyd S Peck](#), [Caray A. Walker](#) & [William Chow](#)

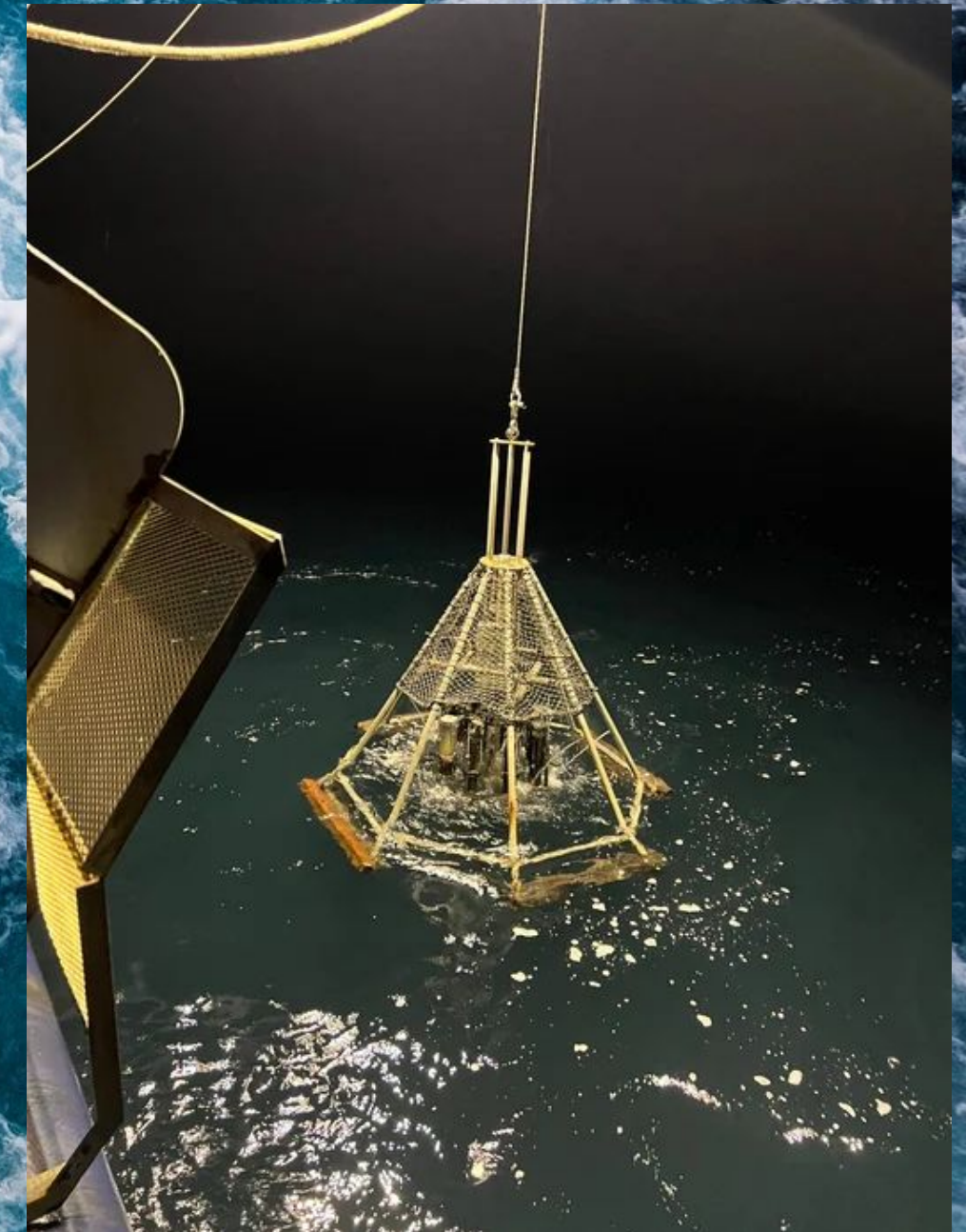
Environmental Microbiome **20**, Article number: 9 (2025) | [Cite this article](#)

[Metrics](#)



SIO Collaboration

A pioneering marine partnership





SIO Collaboration

A pioneering marine partnership

Key Priorities:

Extract over 8000ng of DNA from 10 samples from international waters (or within the EEZ if the permit is authorised).

Methods Paper on the differences in extracting marine sediment samples on the cruise compared to preserving the samples (either with LifeGuard or at -80C) and extracting once back on land.

We are explorers, scientists and believers in

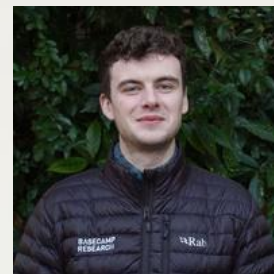
nature



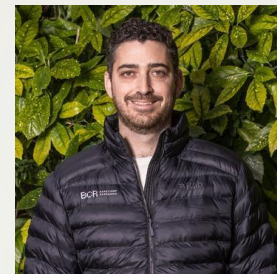
CHANDU AMMINI
Senior Director,
Business Development



**KONSTANTINOS
ANDRIKOPOULOS**
Senior Vice-President, IP



GAVIN AYRES
Deep Learning Scientist



MATT BALAKAR
Senior Principal
Innovation Scientist



TANGGIS BOHNUUD
Director of
Computational Biology



EMMA BOLTON
Director of
Collaborations



RAPHAËL CHALEIL
Computational
Protein Engineer



WILL CHOW
Director of Genomics



LEIF P. CHRISTOFFERSEN
Biodiversity Partnerships Lead



MARLON CLARK
Collaboration Innovation Lead



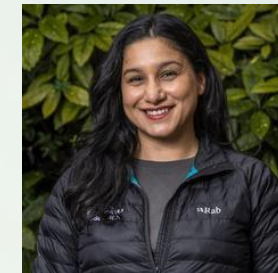
NICK COLEMAN
Finance Director



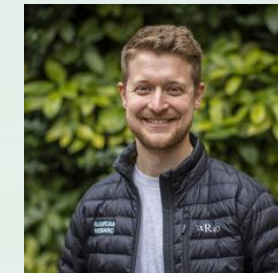
**RICHARD
DE NAPOLI**
Infrastructure Engineer



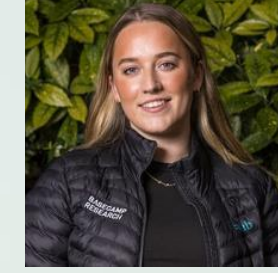
JOHN FINN
Chief Scientific Officer



TONI GEORGIEVA
People Operations Manager



GLEN GOWERS
Co-Founder and CEO



**NADINE
GREENHALGH**
Biodiversity Project Manager



ANUPAMA HOEY
Chief Commercial Officer



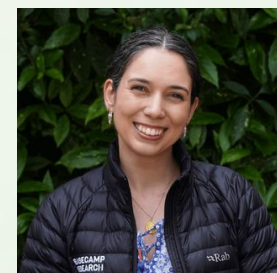
KEITH KAM
Data Project Manager



INEKA KNOT
Field Research Scientist



MARCUS LEUNG
Head of Product



CARLA GRECO
Metagenomics
Bioinformatician



PHIL LORENZ
Chief Technology Officer



GUS MINTO-COWCHER
Platform Engineering Lead



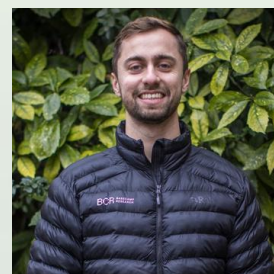
BUPE MWAMBU
Biodiversity
Partnerships Manager



**GERALDENE
MUNSAMY**
Principal Machine
Learning Scientist



PHOEBE OLDACH
Head of Global Research
Programme



**ALEXANDROS
PAPADOPOULOS**
Senior Software
Engineer



NEEM PATEL
Production
Sequencing Scientist



VALERIO PERENO
Strategic Alliances
Lead



SILVANO ULIVI
Laboratory Research
Technician



SAIF UR-REHMAN
Principal Data Engineer



OLIVER VINCE
Co-Founder and COO

Experience from:



Basecamp's
CEO

Basecamp
founded here

Contact
me here

Bupe Mwambingu

Biodiversity Partnerships Manager
bupe@basecamp-research.com

work with us.